

For Research Use Only

OTUD6B Polyclonal antibody

Catalog Number: 25430-1-AP

Featured Product

3 Publications



Basic Information

Catalog Number:

25430-1-AP

Size:

150ul, Concentration: 800 ug/ml by Nanodrop and 313 ug/ml by Bradford method using BSA as the standard;

Source:

Rabbit

Isotype:

IgG

Immunogen Catalog Number:

AG22044

GenBank Accession Number:

BC029760

GeneID (NCBI):

51633

UNIPROT ID:

Q8N6M0

Full Name:

OTU domain containing 6B

Calculated MW:

293 aa, 34 kDa

Observed MW:

34-40 kDa

Purification Method:

Antigen affinity purification

Recommended Dilutions:

WB 1:2000-1:10000

IHC 1:2000-1:8000

IF/ICC 1:50-1:500

Applications

Tested Applications:

WB, IHC, IF/ICC, ELISA

Cited Applications:

WB, IHC, IF

Species Specificity:

human

Cited Species:

human, mouse

Note-IHC: suggested antigen retrieval with TE buffer pH 9.0; (*) Alternatively, antigen retrieval may be performed with citrate buffer pH 6.0

Positive Controls:

WB : HEK-293 cells, HeLa cells, Jurkat cells, MCF-7 cells, PC-3 cells

IHC : human ovary cancer tissue,

IF/ICC : PC-3 cells,

Notable Publications

Author	Pubmed ID	Journal	Application
Valeria E Marotta	39789388	EMBO Rep	WB
Guoqiang Xing	39192576	Cell Biol Int	IHC,IF
Yu Liu	38878112	Cell Mol Life Sci	WB

Storage

Storage:

Store at -20°C. Stable for one year after shipment.

Storage Buffer:

PBS with 0.02% sodium azide and 50% glycerol, pH7.3

Aliquoting is unnecessary for -20°C storage

*** 20ul sizes contain 0.1% BSA

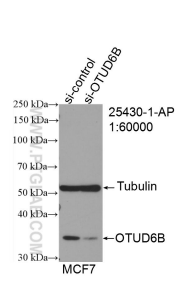
For technical support and original validation data for this product please contact:

T: 1 (888) 4PTGLAB (1-888-478-4522) (toll free in USA), or 1(312) 455-8498 (outside USA)

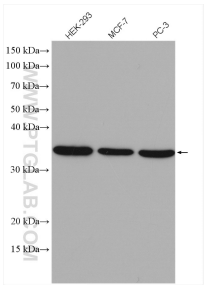
E: proteintech@ptglab.com
W: ptglab.com

This product is exclusively available under Proteintech Group brand and is not available to purchase from any other manufacturer.

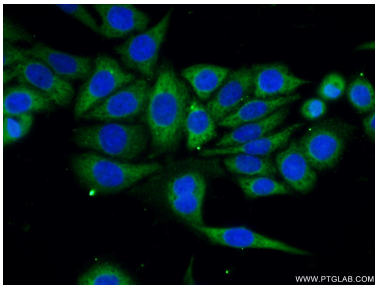
Selected Validation Data



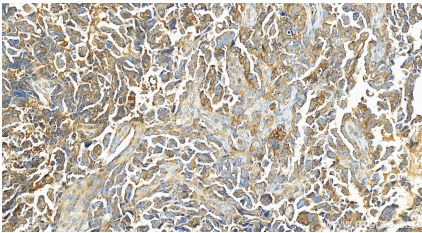
WB result of OTUD6B antibody (25430-1-AP; 1:60000; incubated at room temperature for 1.5 hours) with sh-Control and sh-OTUD6B transfected HeLa cells.



Various lysates were subjected to SDS PAGE followed by western blot with 25430-1-AP (OTUD6B antibody) at dilution of 1:5000 incubated at room temperature for 1.5 hours.



Immunofluorescent analysis of (-20°C Ethanol) fixed PC-3 cells using 25430-1-AP (OTUD6B antibody) at dilution of 1:50 and Alexa Fluor 488-conjugated AffiniPure Goat Anti-Rabbit IgG(H+L).



Immunohistochemical analysis of paraffin-embedded human ovarian cancer slide using 25430-1-AP (OTUD6B antibody) at dilution of 1:4000 (under 20x lens). Heat mediated antigen retrieval with Tris-EDTA buffer (pH 9.0).