

For Research Use Only

# C1orf56 Polyclonal antibody

Catalog Number: 25433-1-AP **1 Publications**



## Basic Information

<b>Catalog Number:</b> 25433-1-AP	<b>GenBank Accession Number:</b> BC002469	<b>Purification Method:</b> Antigen affinity purification
<b>Size:</b> 150ul, Concentration: 1200 µg/ml by Nanodrop and 407 µg/ml by Bradford method using BSA as the standard;	<b>GeneID (NCBI):</b> 54964	<b>Recommended Dilutions:</b> WB 1:500-1:1000 IHC 1:20-1:200
<b>Source:</b> Rabbit	<b>Full Name:</b> chromosome 1 open reading frame 56	
<b>Isotype:</b> IgG	<b>Calculated MW:</b> 341 aa, 37 kDa	
<b>Immunogen Catalog Number:</b> AG13860	<b>Observed MW:</b> 35-37 kDa	

## Applications

<b>Tested Applications:</b> IHC, WB, ELISA	<b>Positive Controls:</b> WB: mouse testis tissue, IHC: human liver cancer tissue,
<b>Cited Applications:</b> WB	
<b>Species Specificity:</b> human, mouse	
<b>Cited Species:</b> human	

**Note-IHC: suggested antigen retrieval with TE buffer pH 9.0; (\*) Alternatively, antigen retrieval may be performed with citrate buffer pH 6.0**

## Background Information

C1orf56, also named as MENT, AF1Q and MLLT11, is involved in control of cellular proliferation. It is extreme expressed in several cancers especially in neuroblastoma. We detected the endogenous protein 35 kDa in mouse testis. We also get a 65 kDa which is unknown.

## Notable Publications

Author	Pubmed ID	Journal	Application
Chenghao Zhanghuang	35558559	Front Mol Biosci	WB

## Storage

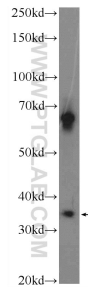
**Storage:**  
Store at -20°C. Stable for one year after shipment.  
**Storage Buffer:**  
PBS with 0.02% sodium azide and 50% glycerol pH 7.3.  
Aliquoting is unnecessary for -20°C storage

**\*\*\* 20ul sizes contain 0.1%BSA**

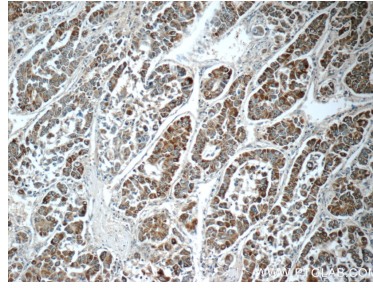
For technical support and original validation data for this product please contact:  
T: 1 (888) 4PTGLAB (1-888-478-4522) (toll free in USA), or 1(312) 455-8498 (outside USA)  
E: proteintech@ptglab.com  
W: ptglab.com

**This product is exclusively available under Proteintech Group brand and is not available to purchase from any other manufacturer.**

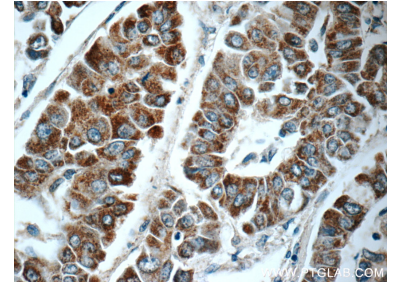
## Selected Validation Data



mouse testis tissue were subjected to SDS PAGE followed by western blot with 25433-1-AP (C1orf56 Antibody) at dilution of 1:600 incubated at room temperature for 1.5 hours.



Immunohistochemical analysis of paraffin-embedded human liver cancer tissue slide using 25433-1-AP (C1orf56 Antibody) at dilution of 1:50 (under 10x lens).



Immunohistochemical analysis of paraffin-embedded human liver cancer tissue slide using 25433-1-AP (C1orf56 Antibody) at dilution of 1:50 (under 40x lens).