

For Research Use Only

RRP36 Polyclonal antibody

Catalog Number: 25440-1-AP



Basic Information

Catalog Number: 25440-1-AP	GenBank Accession Number: BC011933	Purification Method: Antigen affinity purification
Size: 150ul , Concentration: 850 µg/ml by Nanodrop and 433 µg/ml by Bradford method using BSA as the standard;	GeneID (NCBI): 88745	Recommended Dilutions: WB 1:500-1:1000 IF 1:50-1:500
Source: Rabbit	Full Name: chromosome 6 open reading frame 153	
Isotype: IgG	Calculated MW: 259 aa, 30 kDa	
Immunogen Catalog Number: AG22014	Observed MW: 30-40 kDa	

Applications

Tested Applications: IF, WB, ELISA	Positive Controls: WB : MCF-7 cells, HEK-293 cells
Species Specificity: human	IF : MCF-7 cells,

Background Information

Storage

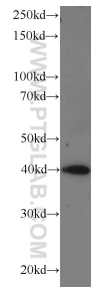
Storage:
Store at -20°C. Stable for one year after shipment.
Storage Buffer:
PBS with 0.02% sodium azide and 50% glycerol pH 7.3.
Aliquoting is unnecessary for -20°C storage

*** 20ul sizes contain 0.1% BSA

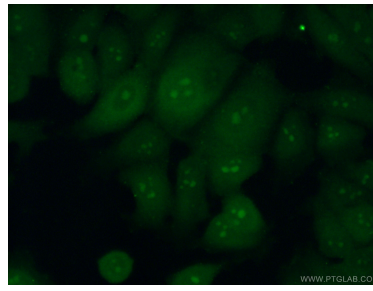
For technical support and original validation data for this product please contact:
T: 1 (888) 4PTGLAB (1-888-478-4522) (toll free in USA), or 1(312) 455-8498 (outside USA) E: proteintech@ptglab.com
W: ptglab.com

This product is exclusively available under Proteintech Group brand and is not available to purchase from any other manufacturer.

Selected Validation Data



MCF-7 cells were subjected to SDS PAGE followed by western blot with 25440-1-AP (RRP36 antibody) at dilution of 1:600 incubated at room temperature for 1.5 hours.



Immunofluorescent analysis of (10% Formaldehyde) fixed MCF-7 cells using 25440-1-AP (RRP36 antibody) at dilution of 1:50 and Alexa Fluor 488-conjugated AffiniPure Goat Anti-Rabbit IgG(H+L).