

For Research Use Only

SAAL1 Polyclonal antibody

Catalog Number: 25467-1-AP

2 Publications



Basic Information

Catalog Number:

25467-1-AP

Size:

150ul , Concentration: 350 ug/ml by Nanodrop and 207 ug/ml by Bradford method using BSA as the standard;

Source:

Rabbit

Isotype:

IgG

Immunogen Catalog Number:

AG22186

GenBank Accession Number:

BC012010

GeneID (NCBI):

113174

UNIPROT ID:

Q96ER3

Full Name:

serum amyloid A-like 1

Calculated MW:

475 aa, 54 kDa

Observed MW:

54-55 kDa

Purification Method:

Antigen affinity purification

Recommended Dilutions:

WB 1:500-1:1000

IF/ICC 1:300-1:1200

Applications

Tested Applications:

WB, IF/ICC, ELISA

Cited Applications:

WB

Species Specificity:

human

Cited Species:

human, mouse

Positive Controls:

WB : HepG2 cells, HEK-293 cells

IF/ICC : HepG2 cells,

Notable Publications

Author	Pubmed ID	Journal	Application
Song Tong	36973678	BMC Cancer	WB
Jingyi Wu	37007016	Front Pharmacol	WB

Storage

Storage:

Store at -20°C. Stable for one year after shipment.

Storage Buffer:

PBS with 0.02% sodium azide and 50% glycerol, pH7.3

Aliquoting is unnecessary for -20°C storage

*** 20ul sizes contain 0.1% BSA

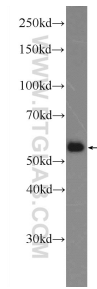
For technical support and original validation data for this product please contact:

T: 1 (888) 4PTGLAB (1-888-478-4522) (toll free in USA), or 1(312) 455-8498 (outside USA)

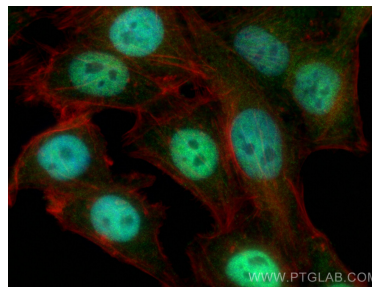
E: proteintech@ptglab.com
W: ptglab.com

This product is exclusively available under Proteintech Group brand and is not available to purchase from any other manufacturer.

Selected Validation Data



HepG2 cells were subjected to SDS PAGE followed by western blot with 25467-1-AP (SAAL1 Antibody) at dilution of 1:600 incubated at room temperature for 1.5 hours.



Immunofluorescent analysis of (4% PFA) fixed HepG2 cells using SAAL1 antibody (25467-1-AP) at dilution of 1:600 and CoraLite®488-Conjugated Goat Anti-Rabbit IgG(H+L) (SA00013-2), CL594-phalloidin (red).