

For Research Use Only

# TMEM24 Polyclonal antibody

Catalog Number: 25507-1-AP

1 Publications



## Basic Information

### Catalog Number:

25507-1-AP

### Size:

150ul, Concentration: 800 ug/ml by Nanodrop and 287 ug/ml by Bradford method using BSA as the standard;

### Source:

Rabbit

### Isotype:

IgG

### Immunogen Catalog Number:

AG21913

### GenBank Accession Number:

BC022219

### GeneID (NCBI):

9854

### UNIPROT ID:

O14523

### Full Name:

C2CD2-like

### Calculated MW:

706 aa, 76 kDa

### Observed MW:

80-100 kDa

### Purification Method:

Antigen affinity purification

### Recommended Dilutions:

WB 1:500-1:2000

IHC 1:50-1:500

## Applications

### Tested Applications:

WB, IHC, ELISA

### Cited Applications:

IF

### Species Specificity:

human, mouse

### Cited Species:

human

### Positive Controls:

WB : HeLa cells,

IHC : human pancreas cancer tissue,

**Note-IHC: suggested antigen retrieval with TE buffer pH 9.0; (\*) Alternatively, antigen retrieval may be performed with citrate buffer pH 6.0**

## Background Information

TMEM24, also named as KIAA0285 and C2CD2L, is identified as a pancreatic islet-enriched protein that plays a key role in regulating glucose-sensitive INS release from the reserve pool of granules. This antibody detects TMEM24 protein with MW 70-100 kDa.

## Notable Publications

Author	Pubmed ID	Journal	Application
Robert S Kiss	37774976	J Biol Chem	IF

## Storage

### Storage:

Store at -20°C. Stable for one year after shipment.

### Storage Buffer:

PBS with 0.02% sodium azide and 50% glycerol pH 7.3.

Aliquoting is unnecessary for -20°C storage

\*\*\* 20ul sizes contain 0.1% BSA

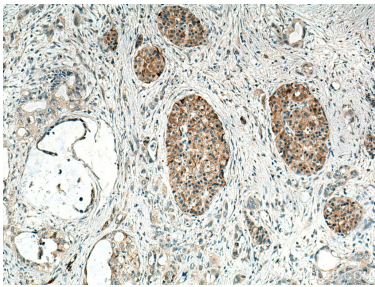
For technical support and original validation data for this product please contact:

T: 1 (888) 4PTGLAB (1-888-478-4522) (toll free in USA), or 1(312) 455-8498 (outside USA)

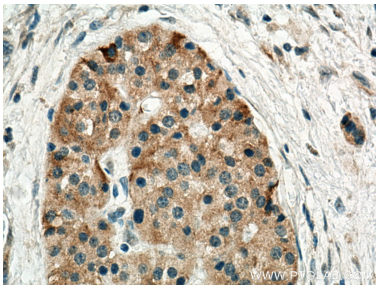
E: [proteintech@ptglab.com](mailto:proteintech@ptglab.com)  
W: [ptglab.com](http://ptglab.com)

This product is exclusively available under Proteintech Group brand and is not available to purchase from any other manufacturer.

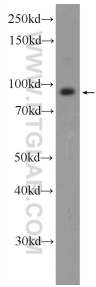
Selected Validation Data



Immunohistochemical analysis of paraffin-embedded human pancreas cancer tissue slide using 25507-1-AP (TMEM24 antibody) at dilution of 1:200 (under 10x lens). Heat mediated antigen retrieval with Tris-EDTA buffer (pH 9.0).



Immunohistochemical analysis of paraffin-embedded human pancreas cancer tissue slide using 25507-1-AP (TMEM24 antibody) at dilution of 1:200 (under 40x lens). Heat mediated antigen retrieval with Tris-EDTA buffer (pH 9.0).



HeLa cells were subjected to SDS PAGE followed by western blot with 25507-1-AP (TMEM24 antibody) at dilution of 1:1000 incubated at room temperature for 1.5 hours.