

For Research Use Only

CTTNBP2NL Polyclonal antibody

Catalog Number: 25523-1-AP

1 Publications



Basic Information

Catalog Number:

25523-1-AP

Size:

150ul, Concentration: 600 ug/ml by Nanodrop;

Source:

Rabbit

Isotype:

IgG

Immunogen Catalog Number:

AG22137

GenBank Accession Number:

BC016029

GeneID (NCBI):

55917

UNIPROT ID:

Q9P2B4

Full Name:

CTTNBP2 N-terminal like

Calculated MW:

639 aa, 70 kDa

Observed MW:

70-75 kDa

Purification Method:

Antigen affinity purification

Recommended Dilutions:

WB 1:2000-1:12000

IP 0.5-4.0 ug for 1.0-3.0 mg of total protein lysate

IHC 1:50-1:500

IF/ICC 1:200-1:800

Applications

Tested Applications:

WB, IHC, IF/ICC, IP, ELISA

Cited Applications:

WB

Species Specificity:

human, mouse

Cited Species:

human

Note-IHC: suggested antigen retrieval with TE buffer pH 9.0; (*) Alternatively, antigen retrieval may be performed with citrate buffer pH 6.0

Positive Controls:

WB : HeLa cells, MDA-MB-453s cells, mouse skin tissue, MCF-7 cells

IP : MCF-7 cells,

IHC : human ovary cancer tissue,

IF/ICC : U2OS cells, MCF-7 cells

Notable Publications

Author	Pubmed ID	Journal	Application
Mohsan Saeed	32997711	PLoS Pathog	WB

Storage

Storage:

Store at -20°C. Stable for one year after shipment.

Storage Buffer:

PBS with 0.02% sodium azide and 50% glycerol pH 7.3.

Aliquoting is unnecessary for -20°C storage

*** 20ul sizes contain 0.1% BSA

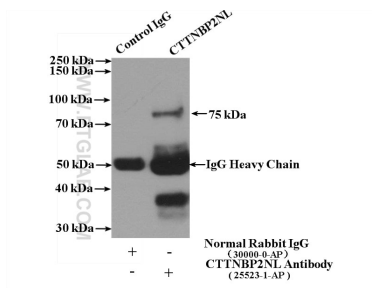
For technical support and original validation data for this product please contact:

T: 1 (888) 4PTGLAB (1-888-478-4522) (toll free in USA), or 1(312) 455-8498 (outside USA)

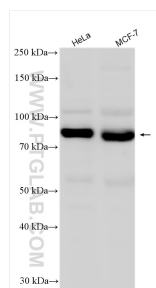
E: proteintech@ptglab.com
W: ptglab.com

This product is exclusively available under Proteintech Group brand and is not available to purchase from any other manufacturer.

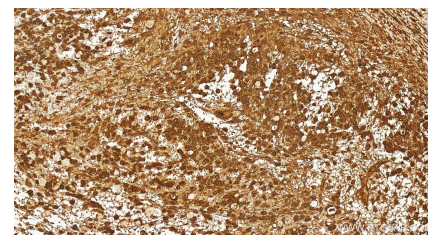
Selected Validation Data



IP result of anti-CTTNBP2NL (IP:25523-1-AP, 4 μ g; Detection:25523-1-AP 1:600) with MCF-7 cells lysate 3200 μ g.



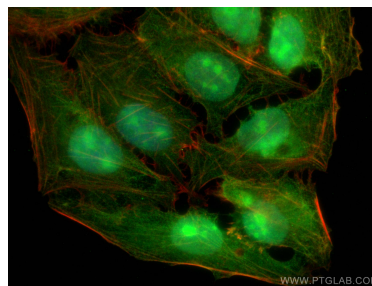
Various lysates were subjected to SDS PAGE followed by western blot with 25523-1-AP (CTTNBP2NL antibody) at dilution of 1:6000 incubated at room temperature for 1.5 hours.



Immunohistochemical analysis of paraffin-embedded human ovary cancer tissue slide using 25523-1-AP (CTTNBP2NL antibody) at dilution of 1:200 (under 20 \times lens). Heat mediated antigen retrieval with Tris-EDTA buffer (pH 9.0).



Immunofluorescent analysis of (4% PFA) fixed MCF-7 cells using CTTNBP2NL antibody (25523-1-AP) at dilution of 1:400 and CoraLite@488-Conjugated AffiniPure Goat Anti-Rabbit IgG(H+L), CL594-Phalloidin (red).



Immunofluorescent analysis of (4% PFA) fixed U2OS cells using CTTNBP2NL antibody (25523-1-AP) at dilution of 1:400 and CoraLite@488-Conjugated AffiniPure Goat Anti-Rabbit IgG(H+L), CL594-Phalloidin (red).