

For Research Use Only

YTHDF3-specific Polyclonal antibody

Catalog Number: 25537-1-AP

Featured Product

100 Publications



Basic Information

Catalog Number:

25537-1-AP

Size:

150ul, Concentration: 850 ug/ml by Nanodrop;

Source:

Rabbit

Isotype:

IgG

Immunogen Catalog Number:

AG22374

GenBank Accession Number:

BC052970

GeneID (NCBI):

253943

UNIPROT ID:

Q7Z739

Full Name:

YTH domain family, member 3

Calculated MW:

585 aa, 64 kDa

Observed MW:

64 kDa

Purification Method:

Antigen affinity purification

Recommended Dilutions:

WB 1:5000-1:50000

IHC 1:50-1:500

IF/ICC 1:200-1:800

Applications

Tested Applications:

WB, IHC, IF/ICC, ELISA

Cited Applications:

WB, IHC, IF, IP, CoIP, RIP

Species Specificity:

human, mouse, rat

Cited Species:

human, mouse, pig, chicken

Note-IHC: suggested antigen retrieval with TE buffer pH 9.0; (*) Alternatively, antigen retrieval may be performed with citrate buffer pH 6.0

Positive Controls:

WB: A549 cells, HeLa cells, HCT 116 cells, HepG2 cells, PC-12 cells, NIH/3T3 cells

IHC: human colon cancer tissue,

IF/ICC: PC-12 cells,

Background Information

YTHDF3, also named as YTH domain-containing family protein 3, is a 585 amino acid protein, which contains 1 YTH domain. YTHDF3 specifically recognizes and binds N6-methyladenosine (m6A)-containing RNAs. M6A is a modification present at internal sites of mRNAs and some non-coding RNAs and plays a role in the efficiency of mRNA splicing, processing and stability. Our antibody 25537-1-AP specially reacts with YTHDF3 protein.

Notable Publications

| Author | Pubmed ID | Journal | Application |
|-------------------|-----------|-------------------------|-------------|
| Fanpeng Zhao | 34593014 | Mol Neurodegener | WB |
| Kusuma Suphakhong | 36183833 | J Biol Chem | WB |
| Deyin Liu | 36171455 | J Cancer Res Clin Oncol | WB, RIP |

Storage

Storage:

Store at -20°C. Stable for one year after shipment.

Storage Buffer:

PBS with 0.02% sodium azide and 50% glycerol, pH7.3

Aliquoting is unnecessary for -20°C storage

*** 20ul sizes contain 0.1% BSA

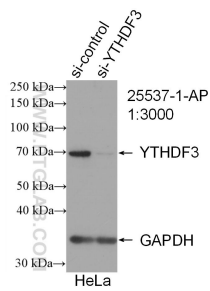
For technical support and original validation data for this product please contact:

T: 1 (888) 4PTGLAB (1-888-478-4522) (toll free in USA), or 1(312) 455-8498 (outside USA)

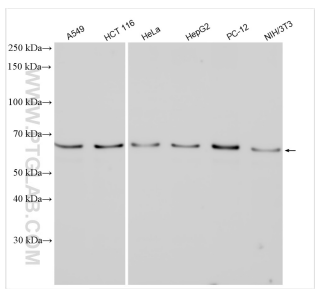
E: proteintech@ptglab.com
W: ptglab.com

This product is exclusively available under Proteintech Group brand and is not available to purchase from any other manufacturer.

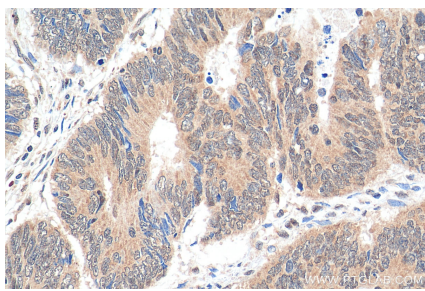
Selected Validation Data



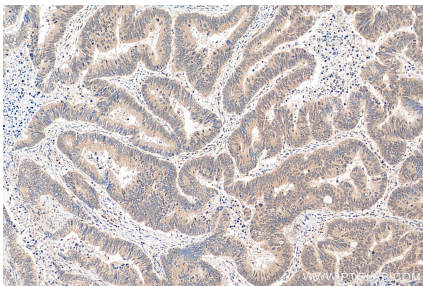
WB result of YTHDF3-specific antibody (25537-1-AP; 1:3000; incubated at room temperature for 1.5 hours) with sh-Control and sh-YTHDF3-specific transfected HeLa cells.



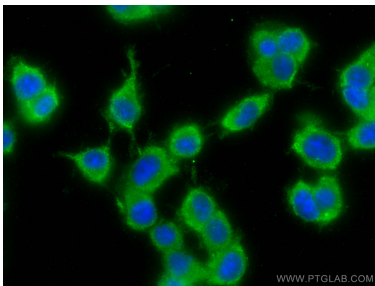
Various lysates were subjected to SDS PAGE followed by western blot with 25537-1-AP (YTHDF3-specific antibody) at dilution of 1:10000 incubated at room temperature for 1.5 hours.



Immunohistochemical analysis of paraffin-embedded human colon cancer tissue slide using 25537-1-AP (YTHDF3-specific antibody) at dilution of 1:200 (under 40x lens). Heat mediated antigen retrieval with Tris-EDTA buffer (pH 9.0).



Immunohistochemical analysis of paraffin-embedded human colon cancer tissue slide using 25537-1-AP (YTHDF3-specific antibody) at dilution of 1:200 (under 10x lens). Heat mediated antigen retrieval with Tris-EDTA buffer (pH 9.0).



Immunofluorescent analysis of (-20°C Ethanol) fixed PC-12 cells using YTHDF3-specific antibody (25537-1-AP) at dilution of 1:400 and CoraLite® 488-Conjugated Goat Anti-Rabbit IgG(H+L).