

For Research Use Only

SCML2 Polyclonal antibody

Catalog Number: 25544-1-AP

Featured Product



Basic Information

Catalog Number:

25544-1-AP

Size:

150ul, Concentration: 1000 ug/ml by Nanodrop and 480 ug/ml by Bradford method using BSA as the standard;

Source:

Rabbit

Isotype:

IgG

Immunogen Catalog Number:

AG22271

GenBank Accession Number:

BC064617

GeneID (NCBI):

10389

UNIPROT ID:

Q9UQR0

Full Name:

sex comb on midleg-like 2 (Drosophila)

Calculated MW:

700 aa, 77 kDa

Observed MW:

70 kDa, 80 kDa

Purification Method:

Antigen affinity purification

Recommended Dilutions:

WB 1:500-1:1000

IP 0.5-4.0 ug for 1.0-3.0 mg of total protein lysate

IF/ICC 1:20-1:200

Applications

Tested Applications:

WB, IF/ICC, IP, ELISA

Species Specificity:

human, mouse

Positive Controls:

WB : HEK-293 cells, mouse testis tissue, K-562 cells

IP : HEK-293 cells,

IF/ICC : HEK-293 cells,

Background Information

The human SCML2 gene, a mammalian homologue of the Drosophila PcG protein SCM, encodes two protein isoforms: SCML2A that is bound to chromatin and SCML2B that is predominantly nucleoplasmic (PMID: 24358021). Polycomb repressive complex-1 (PRC1) is essential for the epigenetic regulation of gene expression. SCML2 is a Polycomb-group protein that associates with PRC1. SCML2 participates in the epigenetic control of transcription directly and in cooperation with PRC1 (PMID: 24986859).

Storage

Storage:

Store at -20°C. Stable for one year after shipment.

Storage Buffer:

PBS with 0.02% sodium azide and 50% glycerol pH 7.3.

Aliquoting is unnecessary for -20°C storage

*** 20ul sizes contain 0.1% BSA

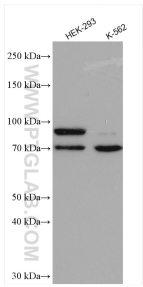
For technical support and original validation data for this product please contact:

T: 1 (888) 4PTGLAB (1-888-478-4522) (toll free in USA), or 1(312) 455-8498 (outside USA)

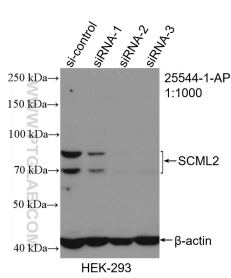
E: proteintech@ptglab.com
W: ptglab.com

This product is exclusively available under Proteintech Group brand and is not available to purchase from any other manufacturer.

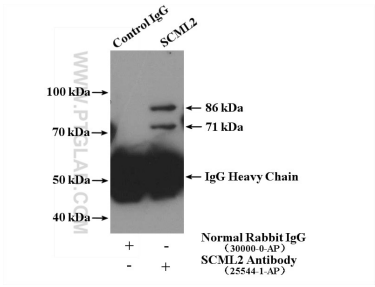
Selected Validation Data



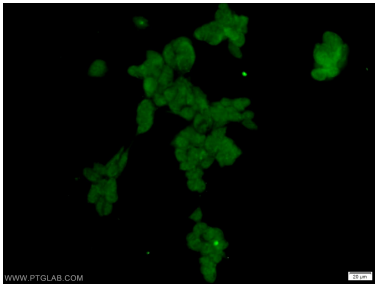
Various lysates were subjected to SDS PAGE followed by western blot with 25544-1-AP (SCML2 antibody) at dilution of 1:800 incubated at room temperature for 1.5 hours.



WB result of SCML2 antibody (25544-1-AP; 1:1000; incubated at room temperature for 1.5 hours) with sh-Control and sh-SCML2 transfected HEK-293 cells.



IP result of anti-SCML2 (IP:25544-1-AP, 4ug; Detection:25544-1-AP 1:300) with HEK-293 cells lysate 2400ug.



Immunofluorescent analysis of HEK-293 cells using 25544-1-AP (SCML2 antibody) at dilution of 1:50 and Alexa Fluor 488-conjugated Goat Anti-Rabbit IgG(H+L).