

For Research Use Only

PNLDC1 Polyclonal antibody

Catalog Number: 25559-1-AP

2 Publications



Basic Information

Catalog Number:

25559-1-AP

Size:

150ul, Concentration: 600 ug/ml by Nanodrop and 300 ug/ml by Bradford method using BSA as the standard;

Source:

Rabbit

Isotype:

IgG

Immunogen Catalog Number:

AG22074

GenBank Accession Number:

BC112246

GeneID (NCBI):

154197

UNIPROT ID:

Q8NA58

Full Name:

poly(A)-specific ribonuclease (PARN)-like domain containing 1

Calculated MW:

520 aa, 60 kDa

Observed MW:

55-60 kDa

Purification Method:

Antigen affinity purification

Recommended Dilutions:

WB 1:500-1:3000

IHC 1:20-1:200

Applications

Tested Applications:

WB, IHC, ELISA

Cited Applications:

WB, IHC

Species Specificity:

human, mouse

Cited Species:

human, silkworm

Positive Controls:

WB: Raji cells,

IHC: human testis tissue,

Note-IHC: suggested antigen retrieval with TE buffer pH 9.0; (*) Alternatively, antigen retrieval may be performed with citrate buffer pH 6.0

Background Information

PNLDC1, also named as Poly(A)-specific ribonuclease PARN-like domain-containing protein 1, is a 520 amino acid protein, which belongs to the CAF1 family. PNLDC1 as a membrane protein localizes in the membrane.

Notable Publications

Author	Pubmed ID	Journal	Application
Siyu Chen	35361267	J Ovarian Res	IHC
Natsuko Izumi	26919431	Cell	WB

Storage

Storage:

Store at -20°C. Stable for one year after shipment.

Storage Buffer:

PBS with 0.02% sodium azide and 50% glycerol pH 7.3.

Aliquoting is unnecessary for -20°C storage

*** 20ul sizes contain 0.1% BSA

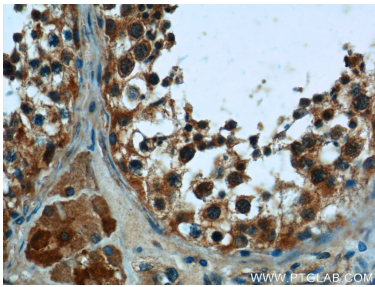
For technical support and original validation data for this product please contact:

T: 1 (888) 4PTGLAB (1-888-478-4522) (toll free in USA), or 1(312) 455-8498 (outside USA)

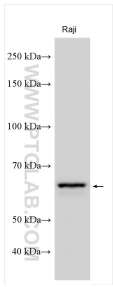
E: proteintech@ptglab.com
W: ptglab.com

This product is exclusively available under Proteintech Group brand and is not available to purchase from any other manufacturer.

Selected Validation Data



Immunohistochemical analysis of paraffin-embedded human testis tissue slide using 25559-1-AP (PNLDC1 Antibody) at dilution of 1:50 (under 40x lens).



Various lysates were subjected to SDS PAGE followed by western blot with 25559-1-AP (PNLDC1 antibody) at dilution of 1:1500 incubated at room temperature for 1.5 hours.