

For Research Use Only

# RB1 Polyclonal antibody

Catalog Number: 25628-1-AP

5 Publications



## Basic Information

### Catalog Number:

25628-1-AP

### Size:

150ul, Concentration: 260 µg/ml by Nanodrop and 187 µg/ml by Bradford method using BSA as the standard;

### Source:

Rabbit

### Isotype:

IgG

### Immunogen Catalog Number:

AG22578

### GenBank Accession Number:

BC039060

### GeneID (NCBI):

5925

### UNIPROT ID:

P06400

### Full Name:

retinoblastoma 1

### Calculated MW:

928 aa, 106 kDa

### Observed MW:

110 kDa

### Purification Method:

Antigen affinity purification

### Recommended Dilutions:

WB 1:200-1:1000

IP 0.5-4.0 µg for 1.0-3.0 mg of total protein lysate

IF/ICC 1:20-1:200

## Applications

### Tested Applications:

WB, IP, IF, ELISA

### Cited Applications:

WB, IF

### Species Specificity:

human

### Cited Species:

human

### Positive Controls:

WB : Jurkat cells, A431 cells

IP : Jurkat cells,

IF/ICC : HepG2 cells,

## Notable Publications

Author	Pubmed ID	Journal	Application
Kun Lu	29285195	Oncol Lett	IF
Da-Peng Yun	29399702	Oncol Rep	WB
Yudi Xiong	30784916	Biomed Pharmacother	WB

## Storage

### Storage:

Store at -20°C. Stable for one year after shipment.

### Storage Buffer:

PBS with 0.02% sodium azide and 50% glycerol pH 7.3.

Aliquoting is unnecessary for -20°C storage

\*\*\* 20ul sizes contain 0.1% BSA

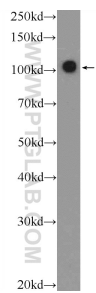
For technical support and original validation data for this product please contact:

T: 1 (888) 4PTGLAB (1-888-478-4522) (toll free in USA), or 1(312) 455-8498 (outside USA)

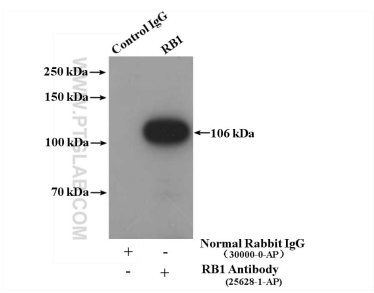
E: [proteintech@ptglab.com](mailto:proteintech@ptglab.com)  
W: [ptglab.com](http://ptglab.com)

This product is exclusively available under Proteintech Group brand and is not available to purchase from any other manufacturer.

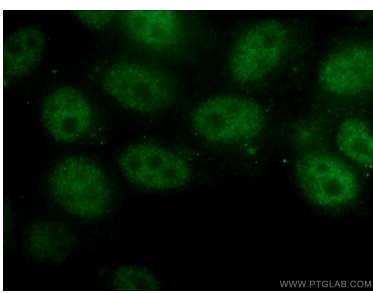
Selected Validation Data



Jurkat cells were subjected to SDS PAGE followed by western blot with 25628-1-AP (RB1 Antibody) at dilution of 1:300 incubated at room temperature for 1.5 hours.



IP result of anti-RB1 (IP:25628-1-AP, 4ug; Detection:25628-1-AP 1:300) with Jurkat cells lysate 3400ug.



Immunofluorescent analysis of HepG2 cells using 25628-1-AP (RB1 antibody) at dilution of 1:50 and Alexa Fluor 488-conjugated AffiniPure Goat Anti-Rabbit IgG(H+L).