

For Research Use Only

CHCHD10 Polyclonal antibody

Catalog Number: 25671-1-AP

Featured Product

23 Publications



Basic Information

Catalog Number:

25671-1-AP

Size:

150ul, Concentration: 600 ug/ml by Nanodrop;

Source:

Rabbit

Isotype:

IgG

Immunogen Catalog Number:

AG22598

GenBank Accession Number:

BC065232

GeneID (NCBI):

400916

UNIPROT ID:

Q8WYQ3

Full Name:

coiled-coil-helix-coiled-coil-helix domain containing 10

Calculated MW:

14 kDa

Observed MW:

14 kDa

Purification Method:

Antigen affinity purification

Recommended Dilutions:

WB: 1:2000-1:10000

IP: 0.5-4.0 ug for 1.0-3.0 mg of total protein lysate

IHC: 1:50-1:500

IF/ICC: 1:200-1:800

ColP: 0.5-4.0 ug for 1.0-3.0 mg of total protein lysate

Applications

Tested Applications:

WB, IHC, IF/ICC, IP, ColP, ELISA

Cited Applications:

WB, IHC, IF, IP

Species Specificity:

human, mouse, rat

Cited Species:

human, mouse, chicken

Note-IHC: suggested antigen retrieval with TE buffer pH 9.0; (*) Alternatively, antigen retrieval may be performed with citrate buffer pH 6.0

Positive Controls:

WB: HEK-293 cells, mouse brain tissue, HAP1, mouse heart tissue, rat heart tissue

IP: mouse heart tissue, HAP1 cells

IHC: human kidney tissue, human heart tissue

IF/ICC: HeLa cells, HAP1

ColP: HepG2 cells,

Background Information

CHCHD10 is a mitochondrial protein that is enriched at cristae junctions in the intermembrane space and is likely involved in mitochondrial genome stability and maintenance of cristae junctions. Mutations in CHCHD10 have recently been described as a cause of frontotemporal dementia (FTD) comorbid with amyotrophic lateral sclerosis (ALS).

Notable Publications

Author	Pubmed ID	Journal	Application
Meng Ding	35709007	Diabetes	WB
Wei Zhou	30496485	Hum Mol Genet	WB,IF
Mai K Nguyen	34791217	Hum Mol Genet	WB,IF

Storage

Storage:

Store at -20°C. Stable for one year after shipment.

Storage Buffer:

PBS with 0.02% sodium azide and 50% glycerol, pH7.3

Aliquoting is unnecessary for -20°C storage

*** 20ul sizes contain 0.1% BSA

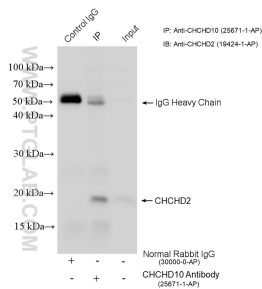
For technical support and original validation data for this product please contact:

T: 1 (888) 4PTGLAB (1-888-478-4522) (toll free in USA), or 1(312) 455-8498 (outside USA)

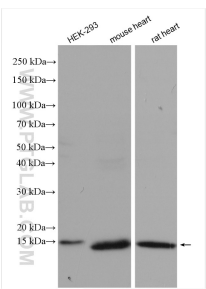
E: proteintech@ptglab.com
W: ptglab.com

This product is exclusively available under Proteintech Group brand and is not available to purchase from any other manufacturer.

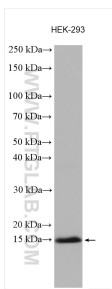
Selected Validation Data



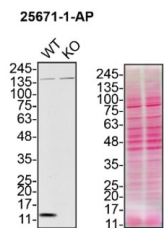
Co-IP result of anti-CHCHD10 (IP:25671-1-AP, 4ug; Detection:19424-1-AP 1:600) with HepG2 cells lysate 1400ug.



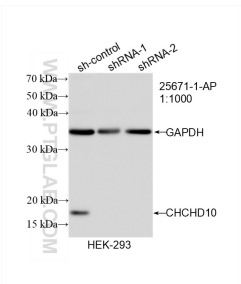
Various lysates were subjected to SDS PAGE followed by western blot with 25671-1-AP (CHCHD10 antibody) at dilution of 1:2000 incubated at room temperature for 1.5 hours.



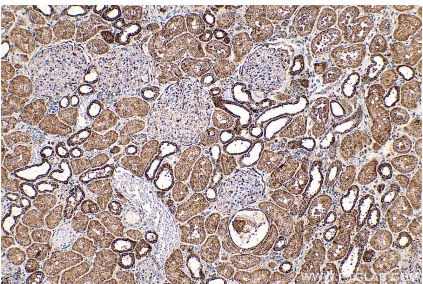
HEK-293 cells were subjected to SDS PAGE followed by western blot with 25671-1-AP (CHCHD10 antibody) at dilution of 1:5000 incubated at room temperature for 1.5 hours.



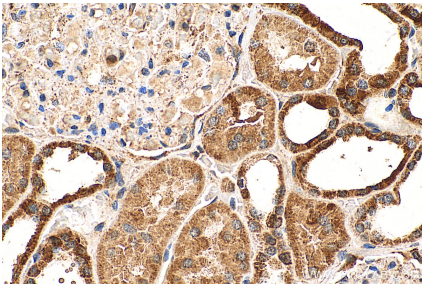
HAP1 (WT and CHCHD10 KO) lysates prepared with RIPA buffer, 50 µg protein loaded. 25671-1-AP incubated at 1:1000 at 4°C overnight in 5% milk in TBST. Ponceau stained transfers shown on right. Data provided by YCharOS, an open science company with a mission to validate commercial antibodies to improve scientific reproducibility and transparency.



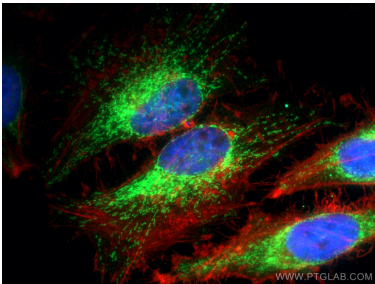
WB result of CHCHD10 antibody (25671-1-AP; 1:1000; incubated at room temperature for 1.5 hours) with sh-Control and sh-CHCHD10 transfected HEK-293 cells.



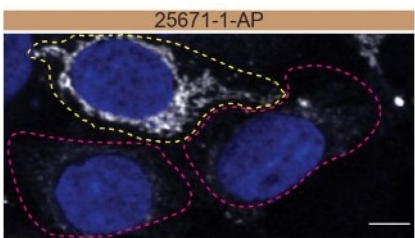
Immunohistochemical analysis of paraffin-embedded human kidney tissue slide using 25671-1-AP (CHCHD10 antibody) at dilution of 1:200 (under 10x lens). Heat mediated antigen retrieval with Tris-EDTA buffer (pH 9.0).



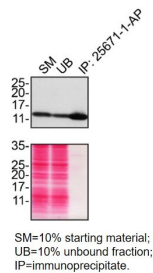
Immunohistochemical analysis of paraffin-embedded human kidney tissue slide using 25671-1-AP (CHCHD10 antibody) at dilution of 1:200 (under 40x lens). Heat mediated antigen retrieval with Tris-EDTA buffer (pH 9.0).



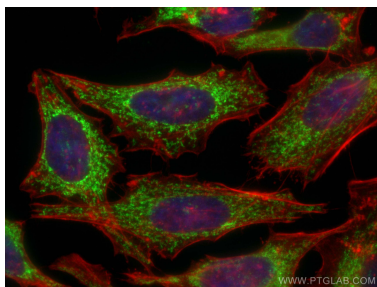
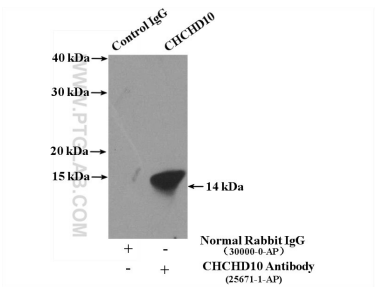
Immunofluorescent analysis of (4% PFA) fixed HeLa cells using CHCHD10 antibody (25671-1-AP) at dilution of 1:400 and CoraLite®488-Conjugated AffiniPure Goat Anti-Rabbit IgG(H+L), CL594-Phalloidin (red).



HAP1 WT cells (yellow outline) and CHCHD10 KO cells (red outline) labelled with a green or a far-red fluorescence dye, respectively. Cells fixed with 4% PFA and stained with 25671-1-AP at 1:300 plus DAPI. Bars = 10 µm. Data provided by YCharOS, an open science company with a mission to validate commercial antibodies to improve scientific reproducibility and transparency.



SM=10% starting material; UB=10% unbound fraction; IP=immunoprecipitate.



HAP1 lysates prepared and IP of CHCHD10 performed using 1.0 µg of 25671-1-AP coupled to protein A- Sepharose beads. The Ponceau stained transfers of each blot are shown. Data provided by YCharOS, an open science company with a mission to validate commercial antibodies to improve scientific reproducibility and transparency.

IP result of anti-CHCHD10 (IP:25671-1-AP, 4ug; Detection:25671-1-AP 1:600) with mouse heart tissue lysate 4000ug.

Immunofluorescent analysis of (4% PFA) fixed HeLa cells using CHCHD10 antibody (25671-1-AP) at dilution of 1:200 and CoraLite®488-Conjugated AffiniPure Goat Anti-Rabbit IgG(H+L), CL594-phalloidin (red).