

For Research Use Only

KK-LC-1 Polyclonal antibody

Catalog Number: 25708-1-AP **2 Publications**



Basic Information

Catalog Number: 25708-1-AP	GenBank Accession Number: BC062223	Purification Method: Antigen affinity purification
Size: 150ul , Concentration: 600 µg/ml by Nanodrop;	GeneID (NCBI): 203413	Recommended Dilutions: WB 1:500-1:3000 IHC 1:50-1:500
Source: Rabbit	Full Name: chromosome X open reading frame 61	
Isotype: IgG	Calculated MW: 13 kDa	
Immunogen Catalog Number: AG22619	Observed MW: 13 kDa	

Applications

Tested Applications: IHC, WB, ELISA	Positive Controls: WB : HeLa cells,
Cited Applications: IHC, WB	IHC : human placenta tissue, human breast cancer tissue
Species Specificity: human, mouse	
Cited Species: human, mouse	

Note-IHC: suggested antigen retrieval with TE buffer pH 9.0; (*) Alternatively, antigen retrieval may be performed with citrate buffer pH 6.0

Background Information

KK-LC-1 has been described as kita-kyushu lung cancer antigen 1, cancer/testis antigen 83. Therefore, KK-LC-1 is also known as CXorf61 and CT83. KK-LC-1 has been tested for association to diseases, such as adenocarcinoma and lung neoplasms. The molecular mass of KK-LC-1 is 13 kDa. Studies have shown that KK-LC-1 is an ideal target for immunotherapy of triple-negative breast cancer (TNBC) (PMID: 26327325).

Notable Publications

Author	Pubmed ID	Journal	Application
Siwei Pan	34678693	Int Immunopharmacol	IHC
Jiawen Bu	37147285	Nat Commun	WB,IHC

Storage

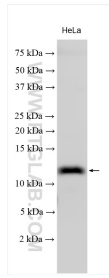
Storage:
Store at -20°C. Stable for one year after shipment.
Storage Buffer:
PBS with 0.02% sodium azide and 50% glycerol pH 7.3.
Aliquoting is unnecessary for -20°C storage

*** 20ul sizes contain 0.1% BSA

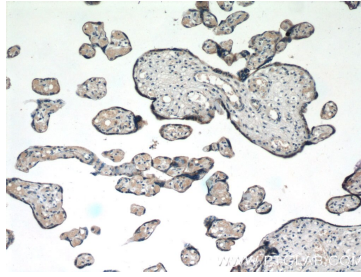
For technical support and original validation data for this product please contact:
T: 1 (888) 4PTGLAB (1-888-478-4522) (toll free in USA), or 1(312) 455-8498 (outside USA)
E: proteintech@ptglab.com
W: ptglab.com

This product is exclusively available under Proteintech Group brand and is not available to purchase from any other manufacturer.

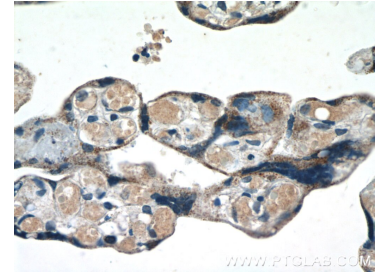
Selected Validation Data



HeLa cells were subjected to SDS PAGE followed by western blot with 25708-1-AP (KK-LC-1 antibody) at dilution of 1:1500 incubated at room temperature for 1.5 hours.



Immunohistochemical analysis of paraffin-embedded human placenta tissue slide using 25708-1-AP (KK-LC-1 Antibody) at dilution of 1:200 (under 10x lens).



Immunohistochemical analysis of paraffin-embedded human placenta tissue slide using 25708-1-AP (KK-LC-1 Antibody) at dilution of 1:200 (under 40x lens).