

For Research Use Only

# SUDS3 Polyclonal antibody

Catalog Number: 25845-1-AP



## Basic Information

**Catalog Number:**

25845-1-AP

**Size:**

150ul, Concentration: 650 ug/ml by Nanodrop and 247 ug/ml by Bradford method using BSA as the standard;

**Source:**

Rabbit

**Isotype:**

IgG

**Immunogen Catalog Number:**

AG22961

**GenBank Accession Number:**

BC112000

**GeneID (NCBI):**

64426

**UNIPROT ID:**

Q9H7L9

**Full Name:**

suppressor of defective silencing 3 homolog (S. cerevisiae)

**Calculated MW:**

328 aa, 38 kDa

**Observed MW:**

43 kDa

**Purification Method:**

Antigen affinity purification

**Recommended Dilutions:**

WB 1:500-1:1000

## Applications

**Tested Applications:**

WB, ELISA

**Species Specificity:**

human

**Positive Controls:**

WB: Raji cells, HL-60 cells

## Background Information

SUDS3 (Sin3 histone deacetylase corepressor complex component SDS3), also known as SAP45 and SDS3, is a component of the Sin3 histone deacetylase corepressor complex. In this complex SDS3 interacts with SIN3A to regulate gene expression via chromatin modification. SUDS3 represses transcription and augments histone deacetylase activity of HDAC1. It may have a potential role in tumor suppressor pathways through regulation of apoptosis.

## Storage

**Storage:**

Store at -20°C. Stable for one year after shipment.

**Storage Buffer:**

PBS with 0.02% sodium azide and 50% glycerol pH 7.3.

Aliquoting is unnecessary for -20°C storage

\*\*\* 20ul sizes contain 0.1% BSA

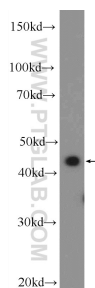
For technical support and original validation data for this product please contact:

T: 1 (888) 4PTGLAB (1-888-478-4522) (toll free in USA), or 1(312) 455-8498 (outside USA)

E: [proteintech@ptglab.com](mailto:proteintech@ptglab.com)  
W: [ptglab.com](http://ptglab.com)

This product is exclusively available under Proteintech Group brand and is not available to purchase from any other manufacturer.

## Selected Validation Data



Raji cells were subjected to SDS PAGE followed by western blot with 25845-1-AP (SUDS3 Antibody) at dilution of 1:600 incubated at room temperature for 1.5 hours.