

For Research Use Only

PIM2 Polyclonal antibody

Catalog Number: 25865-1-AP

1 Publications



Basic Information

Catalog Number:

25865-1-AP

Size:

150ul, Concentration: 260 ug/ml by Nanodrop and 160 ug/ml by Bradford method using BSA as the standard;

Source:

Rabbit

Isotype:

IgG

Immunogen Catalog Number:

AG23130

GenBank Accession Number:

BC018111

GeneID (NCBI):

11040

UNIPROT ID:

Q9P1W9

Full Name:

pim-2 oncogene

Calculated MW:

311 aa, 34 kDa

Observed MW:

34 kDa

Purification Method:

Antigen affinity purification

Recommended Dilutions:

IP 0.5-4.0 ug for 1.0-3.0 mg of total protein lysate
IHC 1:50-1:500

Applications

Tested Applications:

IP, IHC, ELISA

Cited Applications:

WB

Species Specificity:

human, mouse

Cited Species:

human

Positive Controls:

IP: Raji cells,

IHC: mouse liver tissue,

Note-IHC: suggested antigen retrieval with TE buffer pH 9.0; (*) Alternatively, antigen retrieval may be performed with citrate buffer pH 6.0

Background Information

PIM2 was first identified in T and B cell lymphomas in mice and is a member of a serine/threonine kinase family of proto-oncogenes, which also includes PIM1 and PIM3 (PMID:24505470). They share high sequence homology at the amino acid level; PIM1 and PIM2 are 61% identical and PIM1 and PIM3 are 71% identical (PMID:34503111). The PIM2 protein plays an important role in promoting cell survival and preventing apoptosis. PIM2 is mainly expressed in lymphoid and brain tissues. In human cells, the PIM2 kinase has only two isoforms (34 and 41 kDa), but in mice there are three (34, 37, and 40 kDa), and the 34 kDa isoform has been the main focus of many studies because it plays a crucial role in tumor progression (PMID:33854618).

Notable Publications

Author	Pubmed ID	Journal	Application
Yong Meng	35026522	Phytomedicine	WB

Storage

Storage:

Store at -20°C. Stable for one year after shipment.

Storage Buffer:

PBS with 0.02% sodium azide and 50% glycerol pH 7.3.

Aliquoting is unnecessary for -20°C storage

*** 20ul sizes contain 0.1% BSA

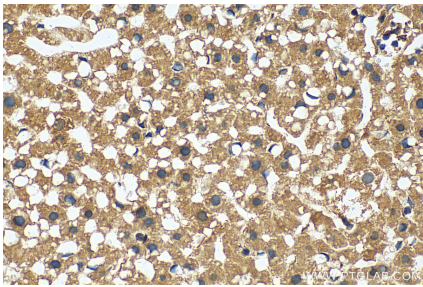
For technical support and original validation data for this product please contact:

T: 1 (888) 4PTGLAB (1-888-478-4522) (toll free in USA), or 1(312) 455-8498 (outside USA)

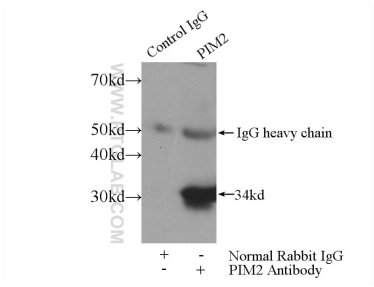
E: proteintech@ptglab.com
W: ptglab.com

This product is exclusively available under Proteintech Group brand and is not available to purchase from any other manufacturer.

Selected Validation Data



Immunohistochemical analysis of paraffin-embedded mouse liver tissue slide using 25865-1-AP (PIM2 antibody) at dilution of 1:200 (under 40x lens). Heat mediated antigen retrieval with Tris-EDTA buffer (pH 9.0).



IP result of anti-PIM2 (IP:25865-1-AP, 4ug; Detection:25865-1-AP 1:300) with Raji cells lysate 1320ug.