

For Research Use Only

LY6G6F Polyclonal antibody

Catalog Number: 25872-1-AP

1 Publications



Basic Information

Catalog Number:

25872-1-AP

Size:

150ul, Concentration: 900 ug/ml by Nanodrop and 433 ug/ml by Bradford method using BSA as the standard;

Source:

Rabbit

Isotype:

IgG

Immunogen Catalog Number:

AG22467

GenBank Accession Number:

BC137212

GeneID (NCBI):

259215

UNIPROT ID:

Q5SQ64

Full Name:

lymphocyte antigen 6 complex, locus G6F

Calculated MW:

297 aa, 32 kDa

Observed MW:

60 kDa

Purification Method:

Antigen affinity purification

Recommended Dilutions:

WB 1:500-1:2000

Applications

Tested Applications:

WB, ELISA

Cited Applications:

IF

Species Specificity:

human

Cited Species:

mouse

Positive Controls:

WB : HepG2 cells, HL-60 cells

Background Information

LY6G6F, also named as C6orf21, G6F, LY6G6D and NG32, plays a role in the downstream signal transduction pathways involving GRB2 and GRB7. It has monomer (~30 kDa) and homodimer (~60 kDa).

Notable Publications

Author	Pubmed ID	Journal	Application
Wuwei Rong	35387479	Arterioscler Thromb Vasc Biol	IF

Storage

Storage:

Store at -20°C. Stable for one year after shipment.

Storage Buffer:

PBS with 0.02% sodium azide and 50% glycerol pH 7.3.

Aliquoting is unnecessary for -20°C storage

*** 20ul sizes contain 0.1% BSA

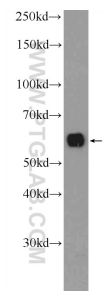
For technical support and original validation data for this product please contact:

T: 1 (888) 4PTGLAB (1-888-478-4522) (toll free in USA), or 1(312) 455-8498 (outside USA)

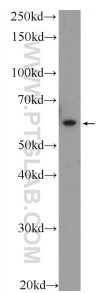
E: proteintech@ptglab.com
W: ptglab.com

This product is exclusively available under Proteintech Group brand and is not available to purchase from any other manufacturer.

Selected Validation Data



HepG2 cells were subjected to SDS PAGE followed by western blot with 25872-1-AP (LY6G6F Antibody) at dilution of 1:1000 incubated at room temperature for 1.5 hours.



HL-60 cells were subjected to SDS PAGE followed by western blot with 25872-1-AP (LY6G6F Antibody) at dilution of 1:1000 incubated at room temperature for 1.5 hours.