

For Research Use Only

MTR Polyclonal antibody

Catalog Number: 25896-1-AP

10 Publications



Basic Information

Catalog Number: 25896-1-AP	GenBank Accession Number: BC130616	Purification Method: Antigen affinity purification
Size: 150ul , Concentration: 500 µg/ml by Nanodrop;	GeneID (NCBI): 4548	Recommended Dilutions: WB 1:500-1:1000 IHC 1:20-1:200 IF 1:20-1:200
Source: Rabbit	Full Name: 5-methyltetrahydrofolate-homocysteine methyltransferase	
Isotype: IgG	Observed MW: 140 kDa	
Immunogen Catalog Number: AG23156		

Applications

Tested Applications: IF, IHC, WB, ELISA	Positive Controls:
Cited Applications: IHC, WB	WB : A375 cells, mouse pancreas tissue
Species Specificity: human, mouse	IHC : human pancreas tissue, human heart tissue
Cited Species: human, mouse	IF : A375 cells,
Note-IHC: suggested antigen retrieval with TE buffer pH 9.0; (*) Alternatively, antigen retrieval may be performed with citrate buffer pH 6.0	

Background Information

Notable Publications

Author	Pubmed ID	Journal	Application
Li Cui	34533844	J Pineal Res	WB
Jiajun Zhu	31607565	Cell Metab	
Jonathan M Ghergurovich	34799699	Nat Metab	WB

Storage

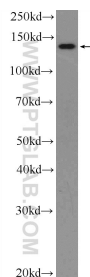
Storage:
Store at -20°C. Stable for one year after shipment.
Storage Buffer:
PBS with 0.02% sodium azide and 50% glycerol pH 7.3.
Aliquoting is unnecessary for -20°C storage

*** 20ul sizes contain 0.1% BSA

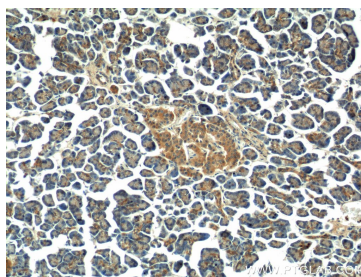
For technical support and original validation data for this product please contact:
T: 1 (888) 4PTGLAB (1-888-478-4522) (toll free in USA), or 1(312) 455-8498 (outside USA)
E: proteintech@ptglab.com
W: ptglab.com

This product is exclusively available under Proteintech Group brand and is not available to purchase from any other manufacturer.

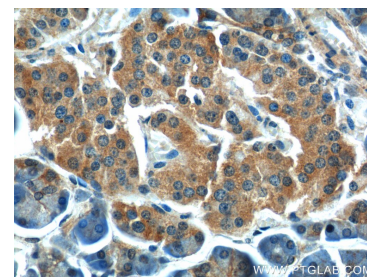
Selected Validation Data



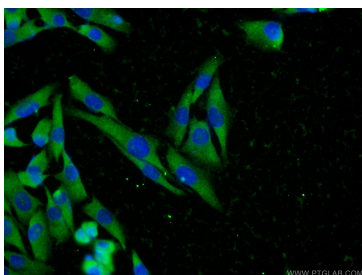
A375 cells were subjected to SDS PAGE followed by western blot with 25896-1-AP (MTR Antibody) at dilution of 1:600 incubated at room temperature for 1.5 hours.



Immunohistochemical analysis of paraffin-embedded human pancreas tissue slide using 25896-1-AP (MTR Antibody) at dilution of 1:50 (under 10x lens).



Immunohistochemical analysis of paraffin-embedded human pancreas tissue slide using 25896-1-AP (MTR Antibody) at dilution of 1:50 (under 40x lens).



Immunofluorescent analysis of A375 cells using 25896-1-AP (MTR antibody) at dilution of 1:50 and Alexa Fluor 488-conjugated AffiniPure Goat Anti-Rabbit IgG(H+L).