

For Research Use Only

# SNW1 Polyclonal antibody

Catalog Number: 25926-1-AP

Featured Product

4 Publications



## Basic Information

<b>Catalog Number:</b> 25926-1-AP	<b>GenBank Accession Number:</b> BC108903	<b>Purification Method:</b> Antigen affinity purification
<b>Size:</b> 150ul , Concentration: 450 µg/ml by Nanodrop and 267 µg/ml by Bradford method using BSA as the standard;	<b>GeneID (NCBI):</b> 22938	<b>Recommended Dilutions:</b> WB 1:500-1:1000 IHC 1:150-1:600 IF 1:50-1:500
<b>Source:</b> Rabbit	<b>Full Name:</b> SNW domain containing 1	
<b>Isotype:</b> IgG	<b>Calculated MW:</b> 536 aa, 61 kDa	
<b>Immunogen Catalog Number:</b> AG23106	<b>Observed MW:</b> 62-69 kDa	

## Applications

<b>Tested Applications:</b> IF, IHC, WB, ELISA	<b>Positive Controls:</b> WB : MCF-7 cells, HepG2 cells
<b>Cited Applications:</b> WB	<b>IHC :</b> human prostate cancer tissue,
<b>Species Specificity:</b> human	<b>IF :</b> HepG2 cells,
<b>Cited Species:</b> human, mouse	

**Note-IHC: suggested antigen retrieval with TE buffer pH 9.0; (\*) Alternatively, antigen retrieval may be performed with citrate buffer pH 6.0**

## Background Information

### Notable Publications

Author	Pubmed ID	Journal	Application
Shuai Hou	31216022	Nucleic Acids Res	WB
Sofie De Munter	28032891	FEBS Lett	WB
Qiao Zhang	32805409	Microbes Infect	WB

## Storage

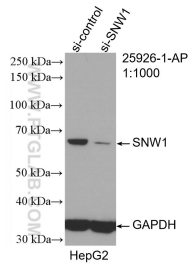
**Storage:**  
Store at -20°C. Stable for one year after shipment.  
**Storage Buffer:**  
PBS with 0.02% sodium azide and 50% glycerol pH 7.3.  
Aliquoting is unnecessary for -20°C storage

\*\*\* 20ul sizes contain 0.1% BSA

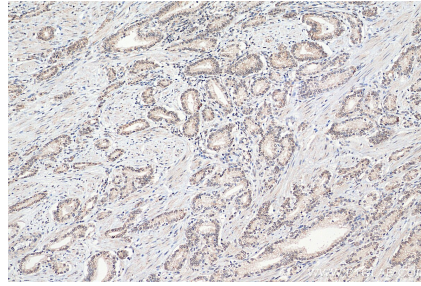
For technical support and original validation data for this product please contact:  
T: 1 (888) 4PTGLAB (1-888-478-4522) (toll free in USA), or 1(312) 455-8498 (outside USA)  
E: proteintech@ptglab.com  
W: ptglab.com

This product is exclusively available under Proteintech Group brand and is not available to purchase from any other manufacturer.

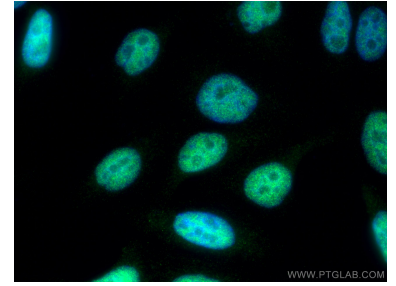
## Selected Validation Data



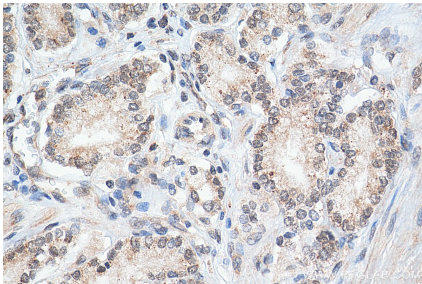
WB result of SNW1 antibody (25926-1-AP; 1:1000; incubated at room temperature for 1.5 hours) with sh-Control and sh-SNW1 transfected HepG2 cells.



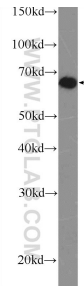
Immunohistochemical analysis of paraffin-embedded human prostate cancer tissue slide using 25926-1-AP (SNW1 antibody) at dilution of 1:300 (under 10x lens). Heat mediated antigen retrieval with Tris-EDTA buffer (pH 9.0).



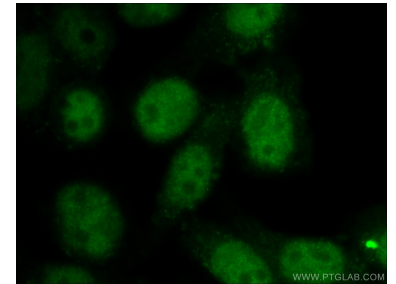
Immunofluorescent analysis of (4% PFA) fixed HepG2 cells using SNW1 antibody (25926-1-AP) at dilution of 1:200 and CoraLite@488-Conjugated AffiniPure Goat Anti-Rabbit IgG(H+L), CL594-Phalloidin (red).



Immunohistochemical analysis of paraffin-embedded human prostate cancer tissue slide using 25926-1-AP (SNW1 antibody) at dilution of 1:300 (under 40x lens). Heat mediated antigen retrieval with Tris-EDTA buffer (pH 9.0).



MCF-7 cells were subjected to SDS PAGE followed by western blot with 25926-1-AP (SNW1 Antibody) at dilution of 1:600 incubated at room temperature for 1.5 hours.



Immunofluorescent analysis of HepG2 cells using 25926-1-AP (SNW1 antibody) at dilution of 1:25 and Alexa Fluor 488-conjugated AffiniPure Goat Anti-Rabbit IgG(H+L).