

For Research Use Only

TCHP Polyclonal antibody

Catalog Number: 25931-1-AP

Featured Product

4 Publications



Basic Information

Catalog Number:

25931-1-AP

Size:

150ul, Concentration: 600 ug/ml by Nanodrop and 407 ug/ml by Bradford method using BSA as the standard;

Source:

Rabbit

Isotype:

IgG

Immunogen Catalog Number:

AG23199

GenBank Accession Number:

BC004285

GeneID (NCBI):

84260

UNIPROT ID:

Q9BT92

Full Name:

trichoplein, keratin filament binding

Calculated MW:

61 kDa

Observed MW:

61 kDa

Purification Method:

Antigen affinity purification

Recommended Dilutions:

WB 1:500-1:1000

IHC 1:50-1:500

IF/ICC 1:50-1:500

Applications

Tested Applications:

WB, IHC, IF/ICC, ELISA

Cited Applications:

WB, IF

Species Specificity:

human

Cited Species:

human

Note-IHC: suggested antigen retrieval with TE buffer pH 9.0; (*) Alternatively, antigen retrieval may be performed with citrate buffer pH 6.0

Positive Controls:

WB : MCF-7 cells,

IHC : human liver tissue, human small intestine tissue

IF/ICC : MCF-7 cells,

Notable Publications

Author	Pubmed ID	Journal	Application
Delowar Hossain	31177295	Cell Mol Life Sci	IF
Min Huang	35147977	J Cell Physiol	WB
Bo Li	36555215	Int J Mol Sci	WB

Storage

Storage:

Store at -20°C. Stable for one year after shipment.

Storage Buffer:

PBS with 0.02% sodium azide and 50% glycerol pH 7.3.

Aliquoting is unnecessary for -20°C storage

*** 20ul sizes contain 0.1% BSA

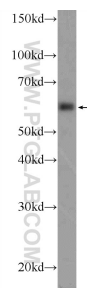
For technical support and original validation data for this product please contact:

T: 1 (888) 4PTGLAB (1-888-478-4522) (toll free in USA), or 1(312) 455-8498 (outside USA)

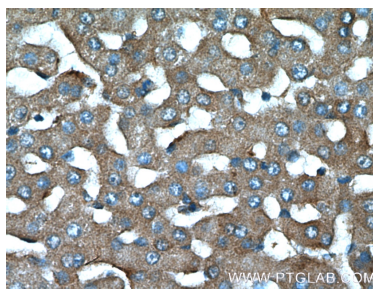
E: proteintech@ptglab.com
W: ptglab.com

This product is exclusively available under Proteintech Group brand and is not available to purchase from any other manufacturer.

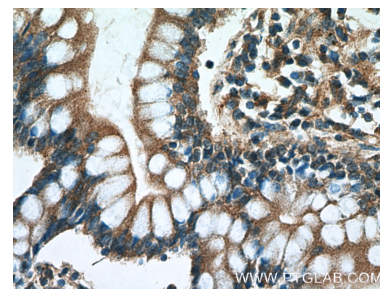
Selected Validation Data



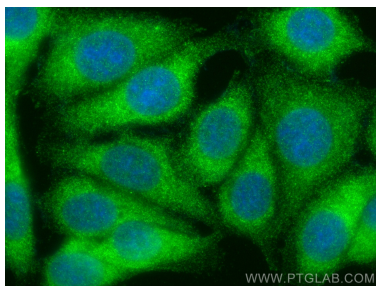
MCF-7 cells were subjected to SDS PAGE followed by western blot with 25931-1-AP (TCHP Antibody) at dilution of 1:600 incubated at room temperature for 1.5 hours.



Immunohistochemical analysis of paraffin-embedded human liver tissue slide using 25931-1-AP (TCHP Antibody) at dilution of 1:200 (under 40x lens).



Immunohistochemical analysis of paraffin-embedded human small intestine tissue slide using 25931-1-AP (TCHP Antibody) at dilution of 1:200 (under 40x lens).



Immunofluorescent analysis of (-20°C Methanol) fixed MCF-7 cells using TCHP antibody (25931-1-AP) at dilution of 1:200 and Multi-rAb CoraLite® Plus 488-Goat Anti-Rabbit Recombinant Secondary Antibody (H+L) (RGAR002).