

For Research Use Only

# PCP4L1 Polyclonal antibody

Catalog Number: 25933-1-AP

Featured Product

3 Publications



## Basic Information

### Catalog Number:

25933-1-AP

### Size:

150ul, Concentration: 600 ug/ml by Nanodrop and 447 ug/ml by Bradford method using BSA as the standard;

### Source:

Rabbit

### Isotype:

IgG

### Immunogen Catalog Number:

AG23061

### GenBank Accession Number:

BC028905

### GeneID (NCBI):

654790

### UNIPROT ID:

A6NKN8

### Full Name:

Purkinje cell protein 4 like 1

### Calculated MW:

68 aa, 7 kDa

### Observed MW:

8-15 kDa

### Purification Method:

Antigen affinity purification

### Recommended Dilutions:

WB 1:500-1:1000

IHC 1:50-1:500

## Applications

### Tested Applications:

WB, IHC, ELISA

### Cited Applications:

WB, IHC

### Species Specificity:

human, mouse, rat

### Cited Species:

mouse

**Note-IHC: suggested antigen retrieval with TE buffer pH 9.0; (\*) Alternatively, antigen retrieval may be performed with citrate buffer pH 6.0**

### Positive Controls:

WB : mouse brain tissue,

IHC : mouse brain tissue,

## Background Information

PCP4L1 (Purkinje cell protein 4-like 1) is a small neuronal IQ motif protein closely related to the calmodulin-binding protein Pcp4/PEP-19 (PMID: 22458599).

## Notable Publications

Author	Pubmed ID	Journal	Application
Baokun Sui	32873321	Genome Biol	WB
Baokun Sui	35234607	J Gen Virol	IHC
Junho Park	38064581	J Proteome Res	WB

## Storage

### Storage:

Store at -20°C. Stable for one year after shipment.

### Storage Buffer:

PBS with 0.02% sodium azide and 50% glycerol pH 7.3.

Aliquoting is unnecessary for -20°C storage

\*\*\* 20ul sizes contain 0.1% BSA

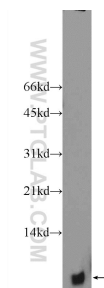
For technical support and original validation data for this product please contact:

T: 1 (888) 4PTGLAB (1-888-478-4522) (toll free in USA), or 1(312) 455-8498 (outside USA)

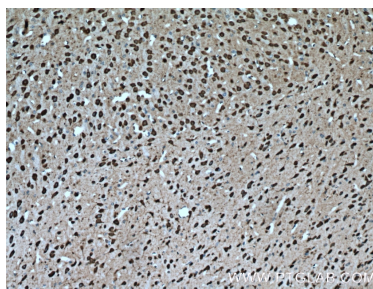
E: [proteintech@ptglab.com](mailto:proteintech@ptglab.com)  
W: [ptglab.com](http://ptglab.com)

This product is exclusively available under Proteintech Group brand and is not available to purchase from any other manufacturer.

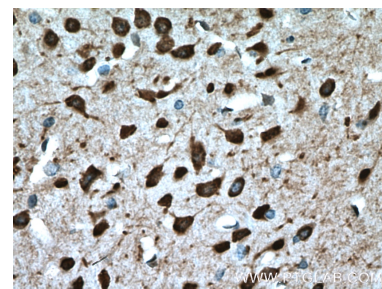
## Selected Validation Data



mouse brain tissue were subjected to SDS PAGE followed by western blot with 25933-1-AP (PCP4L1 Antibody) at dilution of 1:600 incubated at room temperature for 1.5 hours.



Immunohistochemical analysis of paraffin-embedded mouse brain tissue slide using 25933-1-AP (PCP4L1 Antibody) at dilution of 1:400 (under 10x lens). Heat mediated antigen retrieval with Tris-EDTA buffer (pH 9.0).



Immunohistochemical analysis of paraffin-embedded mouse brain tissue slide using 25933-1-AP (PCP4L1 Antibody) at dilution of 1:400 (under 40x lens). Heat mediated antigen retrieval with Tris-EDTA buffer (pH 9.0).