

For Research Use Only

# C2orf3 Polyclonal antibody

Catalog Number: 26029-1-AP



## Basic Information

<b>Catalog Number:</b> 26029-1-AP	<b>GenBank Accession Number:</b> BC064559	<b>Purification Method:</b> Antigen affinity purification
<b>Size:</b> 150ul , Concentration: 500 µg/ml by Nanodrop and 333 µg/ml by Bradford method using BSA as the standard;	<b>GeneID (NCBI):</b> 6936	<b>Recommended Dilutions:</b> WB 1:500-1:1000
<b>Source:</b> Rabbit	<b>Full Name:</b> chromosome 2 open reading frame 3	
<b>Isotype:</b> IgG	<b>Observed MW:</b> 89 kDa	
<b>Immunogen Catalog Number:</b> AG23315		

## Applications

<b>Tested Applications:</b> WB, ELISA	<b>Positive Controls:</b> WB : PC-3 cells, HeLa cells, HepG2 cells
<b>Species Specificity:</b> human	

## Background Information

GC-rich sequence DNA-binding factor is a protein that in humans is encoded by the C2orf3 gene. C2orf3 belongs to the GCF family. It is a factor that represses transcription. It binds to the GC-rich sequences present in the epidermal growth factor receptor, beta-actin, and calcium-dependent protease promoters. The MW of this protein is 89 kDa, and this antibody specially recognises the 89 kDa protein.

## Storage

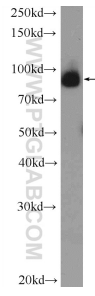
**Storage:**  
Store at -20°C. Stable for one year after shipment.  
**Storage Buffer:**  
PBS with 0.02% sodium azide and 50% glycerol pH 7.3.  
Aliquoting is unnecessary for -20°C storage

\*\*\* 20ul sizes contain 0.1% BSA

For technical support and original validation data for this product please contact:  
T: 1 (888) 4PTGLAB (1-888-478-4522) (toll free in USA), or 1(312) 455-8498 (outside USA)  
E: proteintech@ptglab.com  
W: ptglab.com

This product is exclusively available under Proteintech Group brand and is not available to purchase from any other manufacturer.

## Selected Validation Data



PC-3 cells were subjected to SDS PAGE followed by western blot with 26029-1-AP (C2orf3 Antibody) at dilution of 1:600 incubated at room temperature for 1.5 hours.