

For Research Use Only

RASIP1 Polyclonal antibody

Catalog Number: 26064-1-AP



Basic Information

Catalog Number: 26064-1-AP	GenBank Accession Number: BC021860	Purification Method: Antigen affinity purification
Size: 150ul , Concentration: 300 µg/ml by Nanodrop and 233 µg/ml by Bradford method using BSA as the standard;	GeneID (NCBI): 54922	Recommended Dilutions: WB 1:200-1:1000 IHC 1:50-1:500 IF 1:10-1:100
Source: Rabbit	Full Name: Ras interacting protein 1	
Isotype: IgG	Calculated MW: 963 aa, 103 kDa	
Immunogen Catalog Number: AG22036	Observed MW: 115 kDa	

Applications

Tested Applications: IF, IHC, WB, ELISA	Positive Controls:
Species Specificity: human, mouse, rat	WB : mouse lung tissue, NIH/3T3 cells
Note-IHC: suggested antigen retrieval with TE buffer pH 9.0; (*) Alternatively, antigen retrieval may be performed with citrate buffer pH 6.0	IHC : human heart tissue, human lung tissue
	IF : HepG2 cells,

Background Information

RASIP1, also named as Ras-interacting protein 1 or Rain, is a 963 amino acid protein, which contains one dilute domain and one Ras-associating domain. RASIP1 is highly expressed in heart and detected at lower levels in placenta and pancreas. RASIP1 is required for the proper formation of vascular structures that develop via both vasculogenesis and angiogenesis. RASIP1 acts as a critical and vascular-specific regulator of GTPase signaling, cell architecture, and adhesion, which is essential for endothelial cell morphogenesis and blood vessel tubulogenesis.

Storage

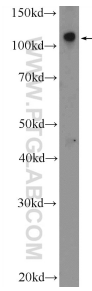
Storage:
Store at -20°C. Stable for one year after shipment.
Storage Buffer:
PBS with 0.02% sodium azide and 50% glycerol pH 7.3.
Aliquoting is unnecessary for -20°C storage

***** 20ul sizes contain 0.1% BSA**

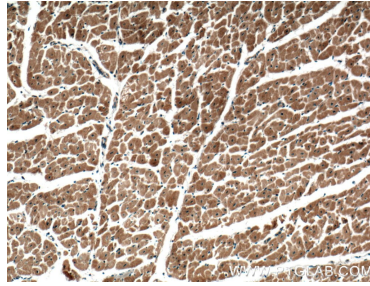
For technical support and original validation data for this product please contact:
T: 1 (888) 4PTGLAB (1-888-478-4522) (toll free in USA), or 1(312) 455-8498 (outside USA)
E: proteintech@ptglab.com
W: ptglab.com

This product is exclusively available under Proteintech Group brand and is not available to purchase from any other manufacturer.

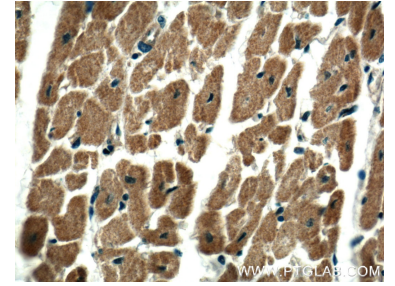
Selected Validation Data



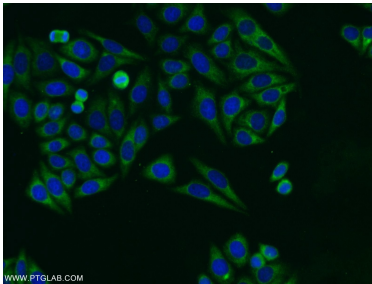
mouse lung tissue were subjected to SDS PAGE followed by western blot with 26064-1-AP (RASIP1 Antibody) at dilution of 1:300 incubated at room temperature for 1.5 hours.



Immunohistochemical analysis of paraffin-embedded human heart tissue slide using 26064-1-AP (RASIP1 Antibody) at dilution of 1:200 (under 10x lens).



Immunohistochemical analysis of paraffin-embedded human heart tissue slide using 26064-1-AP (RASIP1 Antibody) at dilution of 1:200 (under 40x lens).



Immunofluorescent analysis of HepG2 cells using 26064-1-AP (RASIP1 antibody) at dilution of 1:25 and Alexa Fluor 488-conjugated AffiniPure Goat Anti-Rabbit IgG(H+L).