

For Research Use Only

Gamma Tubulin Polyclonal antibody

Catalog Number: 26195-1-AP



Basic Information

Catalog Number: 26195-1-AP	GenBank Accession Number: BC000619	Purification Method: Antigen affinity purification
Size: 150ul , Concentration: 600 ug/ml by Nanodrop and 287 ug/ml by Bradford method using BSA as the standard;	GeneID (NCBI): 7283	Recommended Dilutions: WB: 1:500-1:1000 IHC: 1:50-1:500 IF/ICC: 1:250-1:1000
Source: Rabbit	UNIPROT ID: P23258	
Isotype: IgG	Full Name: tubulin, gamma 1	
Immunogen Catalog Number: AG23575	Calculated MW: 51 kDa	
	Observed MW: 50-55 kDa	

Applications

Tested Applications: WB, IHC, IF/ICC, ELISA	Positive Controls:
Species Specificity: human, mouse, canine	WB : mouse brain tissue, HeLa cells
Note-IHC: suggested antigen retrieval with TE buffer pH 9.0; (*) Alternatively, antigen retrieval may be performed with citrate buffer pH 6.0	IHC : human skin cancer tissue,
	IF/ICC : C2C12 cells, MDCK cells

Background Information

Gamma tubulin is a member of tubulin superfamily and is a key component required for microtubule nucleation and stabilization. It is concentrated at the pericentriolar material of centrosomes in interphase cells, predominantly on spindle poles in mitotic cells, while found in midbodies during cytokinesis. Overexpression of gamma tubulin has been found in various cancers including breast cancer and gliomas. This antibody can well label the centrosome structure.

Storage

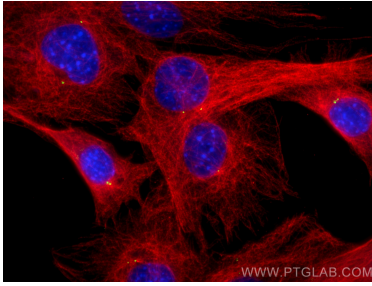
Storage:
Store at -20°C. Stable for one year after shipment.
Storage Buffer:
PBS with 0.02% sodium azide and 50% glycerol, pH7.3
Aliquoting is unnecessary for -20°C storage

*** 20ul sizes contain 0.1% BSA

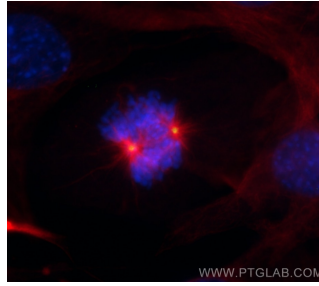
For technical support and original validation data for this product please contact:
T: 1 (888) 4PTGLAB (1-888-478-4522) (toll free in USA), or 1(312) 455-8498 (outside USA)
E: proteintech@ptglab.com
W: ptglab.com

This product is exclusively available under Proteintech Group brand and is not available to purchase from any other manufacturer.

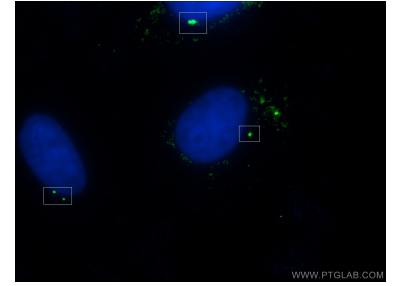
Selected Validation Data



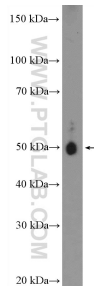
Immunofluorescent analysis of (4% PFA) fixed C2C12 cells using Gamma Tubulin antibody (26195-1-AP) at dilution of 1:500 and CoraLite®488-Conjugated AffiniPure Goat Anti-Rabbit IgG(H+L), Alpha Tubulin antibody (66031-1-Ig, Clone: 1E4C11, red).



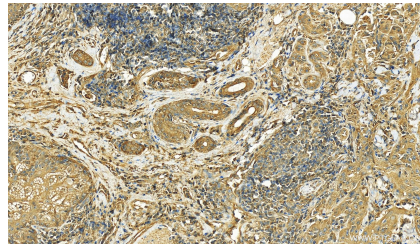
Immunofluorescent analysis of (4% PFA) fixed C2C12 cells using Gamma Tubulin antibody (26195-1-AP) at dilution of 1:500 and CoraLite®488-Conjugated AffiniPure Goat Anti-Rabbit IgG(H+L), Alpha Tubulin antibody (66031-1-Ig, Clone: 1E4C11, red).



Immunofluorescent analysis of (-20°C Ethanol) fixed MDCK cells using 26195-1-AP (gamma tubulin antibody) at dilution of 1:50 and Alexa Fluor 488-conjugated AffiniPure Goat Anti-Rabbit IgG(H+L).



mouse brain tissue were subjected to SDS PAGE followed by western blot with 26195-1-AP (gamma tubulin antibody at dilution of 1:600 incubated at room temperature for 1.5 hours.



Immunohistochemical analysis of paraffin-embedded skin cancer slide using 26195-1-AP (Gamma Tubulin antibody) at dilution of 1:200 (under 20x lens). Heat mediated antigen retrieval with Tris-EDTA buffer (pH 9.0).