

For Research Use Only

# CLEC16A Polyclonal ANTIBODY

Catalog Number: 26257-1-AP



## Basic Information

Catalog Number:  
26257-1-AP

Size:  
52 µg/150 µl

Source:  
Rabbit

Isotype:  
IgG

Purification Method:  
Antigen affinity purification  
Immunogen Catalog Number:  
AC24268

GenBank Accession Number:  
BC112897

GeneID (NCBI):  
23274

Full Name:  
C-type lectin domain family 16, member A

Calculated MW:  
1053aa, 118 kDa

Observed MW:  
104-110 kDa

Recommended Dilutions:  
WB 1:500-1:1000  
IHC 1:50-1:500

## Applications

Tested Applications:  
ELISA, IHC, WB  
Species Specificity:  
human, mouse

Positive Controls:  
WB : mouse spleen tissue;  
IHC : human tonsillitis tissue;

## Background Information

## Notable Publications

Author	Pubmed ID	Journal	Application
--------	-----------	---------	-------------

## Storage

Storage:  
Store at -20°C. Stable for one year after shipment.  
Storage Buffer:  
PBS with 0.1% sodium azide and 50% glycerol pH 7.3.  
Aliquoting is unnecessary for -20°C storage

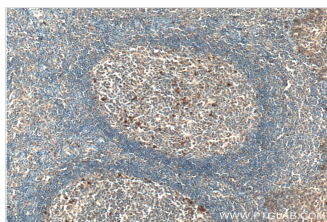
For technical support and original validation data for this product please contact:

T: 1 (888) 4PTGLAB (1-888-478-4522) (toll free in USA), or 1(312) 455-8498 (outside USA)

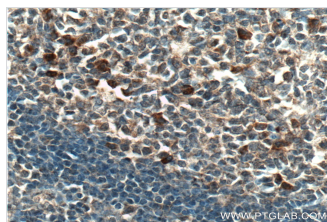
E: [proteintech@ptglab.com](mailto:proteintech@ptglab.com)  
W: [ptglab.com](http://ptglab.com)

This product is exclusively available under Proteintech Group brand and is not available to purchase from any other manufacturer.

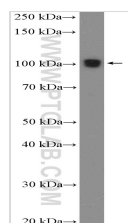
## Selected Validation Data



Immunohistochemistry of paraffin-embedded human tonsillitis tissue slide using 26257-1-AP (CLEC16A antibody) at dilution of 1:200 (under 10x lens) heat mediated antigen retrieved with Tris-EDTA buffer (pH9).



Immunohistochemistry of paraffin-embedded human tonsillitis tissue slide using 26257-1-AP (CLEC16A antibody) at dilution of 1:200 (under 40x lens) heat mediated antigen retrieved with Tris-EDTA buffer (pH9).



mouse spleen tissue were subjected to SDS PAGE followed by western blot with 26257-1-AP (CLEC16A Antibody) at dilution of 1:600 incubated at room temperature for 1.5 hours