

For Research Use Only

# LIF Polyclonal antibody

Catalog Number: 26757-1-AP

Featured Product

16 Publications



## Basic Information

### Catalog Number:

26757-1-AP

### Size:

150ul, Concentration: 450 ug/ml by Nanodrop and 333 ug/ml by Bradford method using BSA as the standard;

### Source:

Rabbit

### Isotype:

IgG

### Immunogen Catalog Number:

AG25076

### GenBank Accession Number:

BC093733

### GeneID (NCBI):

3976

### UNIPROT ID:

P15018

### Full Name:

leukemia inhibitory factor  
(cholinergic differentiation factor)

### Calculated MW:

202 aa, 22 kDa

### Observed MW:

22 kDa, 32 kDa

### Purification Method:

Antigen affinity purification

### Recommended Dilutions:

WB: 1:500-1:1000

IHC: 1:200-1:800

IF-P: 1:50-1:500

IF/ICC: 1:200-1:800

## Applications

### Tested Applications:

WB, IHC, IF/ICC, IF-P, ELISA

### Cited Applications:

WB, IHC, IF

### Species Specificity:

human, mouse

### Cited Species:

human, mouse

**Note-IHC: suggested antigen retrieval with TE buffer pH 9.0; (\*) Alternatively, antigen retrieval may be performed with citrate buffer pH 6.0**

### Positive Controls:

WB: MCF-7 cells, U-87 MG cells

IHC: human lung cancer tissue, mouse embryo tissue

IF-P: mouse embryo tissue,

IF/ICC: A431 cells,

## Background Information

LIF is a pleiotropic cytokine with roles in several different systems. It is involved in the induction of hematopoietic differentiation in normal and myeloid leukemia cells, induction of neuronal cell differentiation, regulator of mesenchymal to epithelial conversion during kidney development, and may also have a role in immune tolerance at the maternal-fetal interface. LIF is a glycoprotein with variable molecular weight (38-67 kDa) due to differential glycosylation. (PMID: 8262236, PMID: 35204717)

## Notable Publications

Author	Pubmed ID	Journal	Application
Xiaofang Tan	32950746	J Gynecol Obstet Hum Reprod	IHC
Wenna Jiang	32914874	Int J Cancer	IHC
Yuhao Zhao	34496883	Reprod Biol Endocrinol	WB

## Storage

### Storage:

Store at -20°C. Stable for one year after shipment.

### Storage Buffer:

PBS with 0.02% sodium azide and 50% glycerol, pH7.3

Aliquoting is unnecessary for -20°C storage

\*\*\* 20ul sizes contain 0.1% BSA

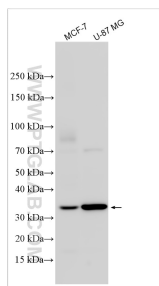
For technical support and original validation data for this product please contact:

T: 1 (888) 4PTGLAB (1-888-478-4522) (toll free in USA), or 1(312) 455-8498 (outside USA)

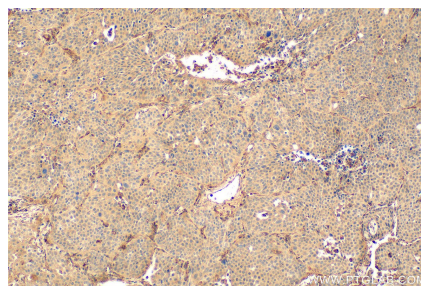
E: proteintech@ptglab.com  
W: ptglab.com

This product is exclusively available under Proteintech Group brand and is not available to purchase from any other manufacturer.

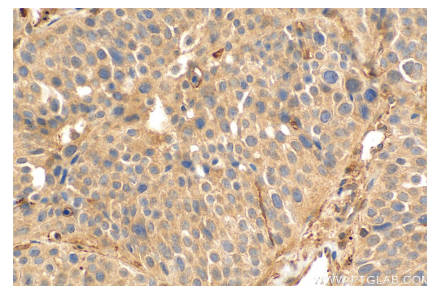
## Selected Validation Data



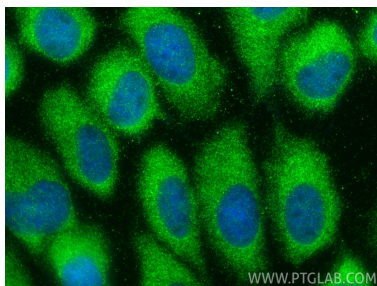
Various lysates were subjected to SDS PAGE followed by western blot with 26757-1-AP (LIF antibody) at dilution of 1:500 incubated at room temperature for 1.5 hours.



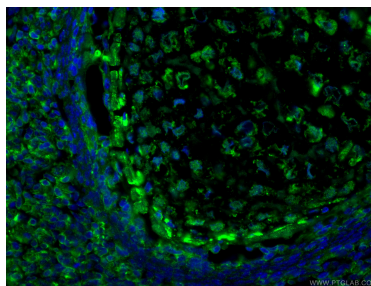
Immunohistochemical analysis of paraffin-embedded human lung cancer tissue slide using 26757-1-AP (LIF antibody) at dilution of 1:400 (under 20x lens). Heat mediated antigen retrieval with Tris-EDTA buffer (pH 9.0).



Immunohistochemical analysis of paraffin-embedded human lung cancer tissue slide using 26757-1-AP (LIF antibody) at dilution of 1:400 (under 20x lens). Heat mediated antigen retrieval with Tris-EDTA buffer (pH 9.0).



Immunofluorescent analysis of (-20°C Methanol) fixed A431 cells using LIF antibody (26757-1-AP) at dilution of 1:400 and CoraLite®488-Conjugated Goat Anti-Rabbit IgG(H+L) (SA00013-2).



Immunofluorescent analysis of (4% PFA) fixed mouse embryo tissue using LIF antibody (26757-1-AP) at dilution of 1:200 and CoraLite®488-Conjugated AffiniPure Goat Anti-Rabbit IgG(H+L).