

For Research Use Only

Integrin alpha 6 Polyclonal antibody

Catalog Number: 27189-1-AP

Featured Product

27 Publications



Basic Information

Catalog Number:

27189-1-AP

Size:

150ul, Concentration: 240 ug/ml by Nanodrop;

Source:

Rabbit

Isotype:

IgG

Immunogen Catalog Number:

AG25835

GenBank Accession Number:

BC136456

GeneID (NCBI):

3655

UNIPROT ID:

P23229

Full Name:

integrin, alpha 6

Calculated MW:

1073 aa, 119 kDa

Observed MW:

110-130 kDa

Purification Method:

Antigen affinity purification

Recommended Dilutions:

WB: 1:2000-1:12000

IHC: 1:500-1:2000

Applications

Tested Applications:

WB, IHC, ELISA

Cited Applications:

WB, IHC, IF

Species Specificity:

human, mouse, rat

Cited Species:

human, mouse, rat, monkey, bovine, hamster

Note-IHC: suggested antigen retrieval with TE buffer pH 9.0; (*) Alternatively, antigen retrieval may be performed with citrate buffer pH 6.0

Positive Controls:

WB: A549 cells, A431 cells, HepG2 cells, mouse lung tissue, Calu-1 cells, SW480 cells, rat lung tissue

IHC: mouse skin tissue, human colon tissue, mouse colon tissue

Background Information

The integrins are a superfamily of cell adhesion receptors that bind to extracellular matrix ligands, cell-surface ligands, and soluble ligands (PMID: 17543136). They are transmembrane $\alpha\beta$ heterodimers and at least 24 distinct integrin heterodimers are formed by the combination of 18 α and eight β known subunits (PMID: 17543136; 20029421). In addition to mediating cell adhesion, integrins also play important roles in modulating signal transduction pathways that control cellular responses including migration, proliferation, differentiation, and apoptosis (PMID:19118207). Integrin alpha 6 (ITGA6, also known as CD49f or VLA-6) is a 120-kDa single-pass type 1 transmembrane glycoprotein, which combines with the beta 1 subunit (ITGB1, CD29) or beta 4 subunit (ITGB4, CD104) to form heterodimeric laminin receptors (PMID: 1976638; 2351695). Integrin alpha 6 mediates cell-to-cell and cell-to-stroma adhesion. It has also been found in many different stem cell populations and is involved in homing and connecting stem cells to their niches and regulating self-renewal mechanisms in stem cells (PMID: 28494695).

Notable Publications

Author	Pubmed ID	Journal	Application
Li Wu	36184060	Vascul Pharmacol	IF
Yuka Mizuno	36311716	Front Immunol	WB
Tianyi Cheng	36336028	Exp Cell Res	WB

Storage

Storage:

Store at -20°C. Stable for one year after shipment.

Storage Buffer:

PBS with 0.02% sodium azide and 50% glycerol, pH7.3

Aliquoting is unnecessary for -20°C storage

*** 20ul sizes contain 0.1% BSA

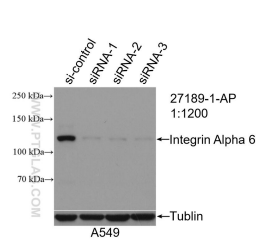
For technical support and original validation data for this product please contact:

T: 1 (888) 4PTGLAB (1-888-478-4522) (toll free in USA), or 1(312) 455-8498 (outside USA)

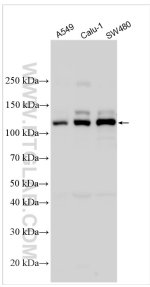
E: proteintech@ptglab.com
W: ptglab.com

This product is exclusively available under Proteintech Group brand and is not available to purchase from any other manufacturer.

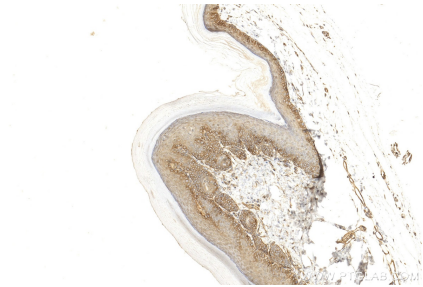
Selected Validation Data



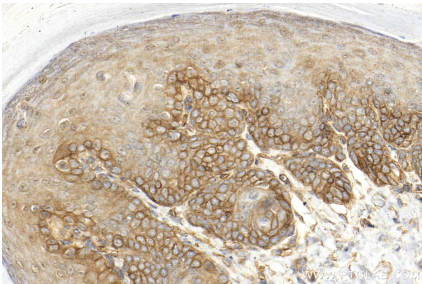
WB result of Integrin Alpha 6 antibody (27189-1-AP; 1:1200; incubated at room temperature for 1.5 hours) with sh-Control and sh-Integrin Alpha 6 transfected A549 cells.



Various lysates were subjected to SDS PAGE followed by western blot with 27189-1-AP (Integrin alpha 6 antibody) at dilution of 1:6000 incubated at room temperature for 1.5 hours.



Immunohistochemical analysis of paraffin-embedded mouse skin tissue slide using 27189-1-AP (Integrin alpha 6 antibody) at dilution of 1:1000 (under 10x lens). Heat mediated antigen retrieval with Tris-EDTA buffer (pH 9.0).



Immunohistochemical analysis of paraffin-embedded mouse skin tissue slide using 27189-1-AP (Integrin alpha 6 antibody) at dilution of 1:1000 (under 40x lens). Heat mediated antigen retrieval with Tris-EDTA buffer (pH 9.0).