

For Research Use Only

BCL10 Polyclonal antibody

Catalog Number: 50180-1-AP

Featured Product

3 Publications



Basic Information

Catalog Number:

50180-1-AP

Size:

150ul, Concentration: 850 ug/ml by Nanodrop and 400 ug/ml by Bradford method using BSA as the standard;

Source:

Rabbit

Isotype:

IgG

Immunogen Catalog Number:

AG0037

GenBank Accession Number:

BC053617

GeneID (NCBI):

8915

UNIPROT ID:

O95999

Full Name:

B-cell CLL/lymphoma 10

Calculated MW:

233 aa, 26 kDa

Observed MW:

26-32 kDa

Purification Method:

Antigen affinity purification

Recommended Dilutions:

WB 1:1000-1:6000

IHC 1:250-1:1000

IF/ICC 1:50-1:500

Applications

Tested Applications:

WB, IHC, IF/ICC, ELISA

Cited Applications:

WB

Species Specificity:

human, mouse, rat

Cited Species:

human, mouse

Note-IHC: suggested antigen retrieval with TE buffer pH 9.0; (*) Alternatively, antigen retrieval may be performed with citrate buffer pH 6.0

Positive Controls:

WB : A549 cells, K-562 cells, Jurkat cells, Raji cells, Ramos cells, mouse ovary tissue, rat ovary tissue

IHC : human lung cancer tissue, human colon cancer tissue

IF/ICC : A549 cells,

Background Information

The gene encoding BCL10 was identified by its recurrent translocation t(1;14)(p22;q32) in a case of mucosa-associated lymphoid tissue (MALT) lymphoma. BCL10 contains a caspase recruitment domain (CARD), and has been shown to induce apoptosis and to activate NF-kappaB.

Notable Publications

| Author | Pubmed ID | Journal | Application |
|-------------------|-----------|-------------|-------------|
| Fatma Aybuke Mazi | 36708753 | Cell Signal | WB |
| Dong Wei W | 16831874 | J Biol Chem | WB |
| Liu Yingle Y | 15213237 | J Biol Chem | WB |

Storage

Storage:

Store at -20°C. Stable for one year after shipment.

Storage Buffer:

PBS with 0.02% sodium azide and 50% glycerol pH 7.3.

Aliquoting is unnecessary for -20°C storage

*** 20ul sizes contain 0.1% BSA

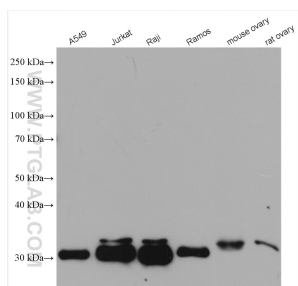
For technical support and original validation data for this product please contact:

T: 1 (888) 4PTGLAB (1-888-478-4522) (toll free in USA), or 1(312) 455-8498 (outside USA)

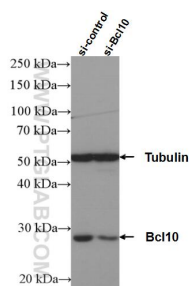
E: proteintech@ptglab.com
W: ptglab.com

This product is exclusively available under Proteintech Group brand and is not available to purchase from any other manufacturer.

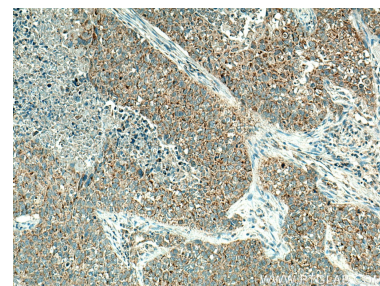
Selected Validation Data



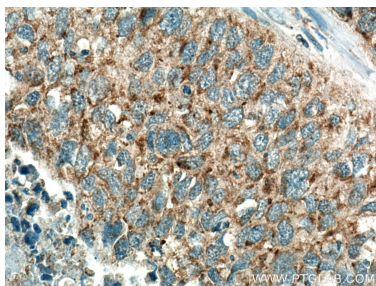
Various lysates were subjected to SDS PAGE followed by western blot with 50180-1-AP (BCL10 antibody) at dilution of 1:3000 incubated at room temperature for 1.5 hours.



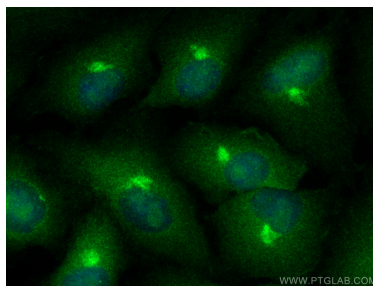
WB result of BCL10 antibody (50180-1-AP; 1:1000; incubated at room temperature for 1.5 hours) with sh-Control and sh-BCL10 transfected K-562 cells.



Immunohistochemical analysis of paraffin-embedded human lung cancer tissue slide using 50180-1-AP (BCL10 antibody) at dilution of 1:500 (under 10x lens). Heat mediated antigen retrieval with Tris-EDTA buffer (pH 9.0).



Immunohistochemical analysis of paraffin-embedded human lung cancer tissue slide using 50180-1-AP (BCL10 antibody) at dilution of 1:500 (under 40x lens). Heat mediated antigen retrieval with Tris-EDTA buffer (pH 9.0).



Immunofluorescent analysis of (4% PFA) fixed A549 cells using BCL10 antibody (50180-1-AP) at dilution of 1:200 and Coralite®488-Conjugated AffiniPure Goat Anti-Rabbit IgG(H+L).