

For Research Use Only

# LYVE1 Polyclonal antibody

Catalog Number: 51011-1-AP

11 Publications



## Basic Information

### Catalog Number:

51011-1-AP

### Size:

150ul, Concentration: 600 µg/ml by Nanodrop;

### Source:

Rabbit

### Isotype:

IgG

### Immunogen Catalog Number:

AG0570

### GenBank Accession Number:

BC026231

### GeneID (NCBI):

10894

### UNIPROT ID:

Q9Y5Y7

### Full Name:

lymphatic vessel endothelial hyaluronan receptor 1

### Calculated MW:

322 aa, 35 kDa

### Observed MW:

60-70 kDa

### Purification Method:

Antigen affinity purification

### Recommended Dilutions:

WB 1:500-1:2000

## Applications

### Tested Applications:

WB, ELISA

### Cited Applications:

WB, IHC, IF

### Species Specificity:

human, mouse

### Cited Species:

human, mouse

### Positive Controls:

WB : HUVEC cells, human brain tissue, bEnd.3 cells

## Background Information

LYVE1 is a 322-amino acid type-I integral membrane glycoprotein primarily expressed on lymphatic endothelial cells. LYVE1 is a CD44 homologue. It acts as a receptor and binds to both soluble and immobilized hyaluronan. LYVE1 may function in lymphatic hyaluronan transport and in tumor metastasis.

## Notable Publications

Author	Pubmed ID	Journal	Application
Xinying Guo	36429052	Cells	IHC
Xin Liang	29752441	Cell Death Dis	
Shi-Ran Yu	35615671	Front Physiol	IF

## Storage

### Storage:

Store at -20°C. Stable for one year after shipment.

### Storage Buffer:

PBS with 0.02% sodium azide and 50% glycerol pH 7.3.

Aliquoting is unnecessary for -20°C storage

\*\*\* 20ul sizes contain 0.1% BSA

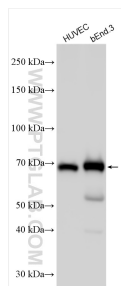
For technical support and original validation data for this product please contact:

T: 1 (888) 4PTGLAB (1-888-478-4522) (toll free in USA), or 1(312) 455-8498 (outside USA)

E: [proteintech@ptglab.com](mailto:proteintech@ptglab.com)  
W: [ptglab.com](http://ptglab.com)

This product is exclusively available under Proteintech Group brand and is not available to purchase from any other manufacturer.

## Selected Validation Data



Various lysates were subjected to SDS PAGE followed by western blot with 51011-1-AP (LYVE1 antibody) at dilution of 1:1000 incubated at room temperature for 1.5 hours.