

For Research Use Only

SPTLC2 Polyclonal antibody

Catalog Number: 51012-2-AP

Featured Product

17 Publications



Basic Information

Catalog Number:

51012-2-AP

Size:

150ul, Concentration: 800 ug/ml by Nanodrop;

Source:

Rabbit

Isotype:

IgG

GenBank Accession Number:

BC005123

GeneID (NCBI):

9517

UNIPROT ID:

O15270

Full Name:

serine palmitoyltransferase, long chain base subunit 2

Calculated MW:

63 kDa

Observed MW:

55-65 kDa

Purification Method:

Antigen affinity purification

Recommended Dilutions:

WB 1:1000-1:6000

IHC 1:50-1:500

Applications

Tested Applications:

WB, IHC, ELISA

Cited Applications:

WB, IHC, IF, ColP

Species Specificity:

human, mouse

Cited Species:

human, mouse, rat

Note-IHC: suggested antigen retrieval with TE buffer pH 9.0; (*) Alternatively, antigen retrieval may be performed with citrate buffer pH 6.0

Positive Controls:

WB : A549 cells, mouse brain tissue, HEK-293 cells, HT-29 cells, HepG2 cells, NIH/3T3 cells

IHC : human colon tissue,

Notable Publications

Author	Pubmed ID	Journal	Application
Pablo Ranea-Robles	34651140	Kidney360	WB
Christina D Camell	26438821	J Biol Chem	WB
Yi-Yu Qi	35391788	Drug Des Devel Ther	IF

Storage

Storage:

Store at -20°C. Stable for one year after shipment.

Storage Buffer:

PBS with 0.02% sodium azide and 50% glycerol pH 7.3.

Aliquoting is unnecessary for -20°C storage

*** 20ul sizes contain 0.1% BSA

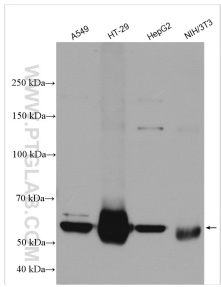
For technical support and original validation data for this product please contact:

T: 1 (888) 4PTGLAB (1-888-478-4522) (toll free in USA), or 1(312) 455-8498 (outside USA)

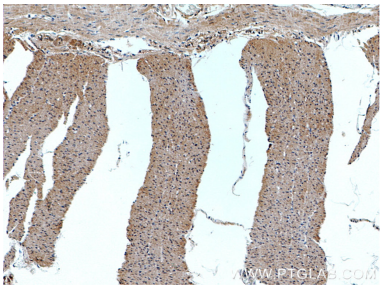
E: proteintech@ptglab.com
W: ptglab.com

This product is exclusively available under Proteintech Group brand and is not available to purchase from any other manufacturer.

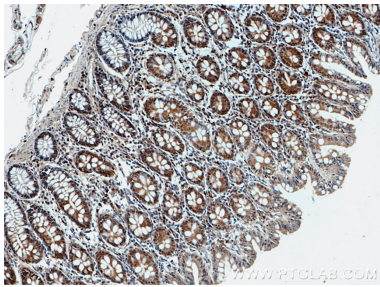
Selected Validation Data



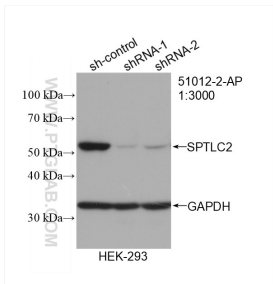
Various lysates were subjected to SDS PAGE followed by western blot with 51012-2-AP (SPTLC2 antibody) at dilution of 1:3000 incubated at room temperature for 1.5 hours.



Immunohistochemical analysis of paraffin-embedded human colon tissue slide using 51012-2-AP (SPTLC2 antibody) at dilution of 1:200 (under 10x lens).



Immunohistochemical analysis of paraffin-embedded human colon tissue slide using 51012-2-AP (SPTLC2 antibody) at dilution of 1:200 (under 10x lens).



WB result of SPTLC2 antibody (51012-2-AP; 1:3000; incubated at room temperature for 1.5 hours) with sh-Control and sh-SPTLC2 transfected HEK-293 cells.