

For Research Use Only

GRHPR Polyclonal antibody

Catalog Number: 51013-2-AP



Basic Information

Catalog Number: 51013-2-AP	GenBank Accession Number: BC000605	Purification Method: Antigen affinity purification
Size: 150ul , Concentration: 350 ug/ml by Nanodrop and 167 ug/ml by Bradford method using BSA as the standard;	GeneID (NCBI): 9380	Recommended Dilutions: WB 1:500-1:1000 IHC 1:20-1:200
Source: Rabbit	UNIPROT ID: Q9UBQ7	
Isotype: IgG	Full Name: glyoxylate reductase/hydroxypyruvate reductase	
Immunogen Catalog Number: AG0484	Calculated MW: 328 aa, 36 kDa	
	Observed MW: 36 kDa	

Applications

Tested Applications: WB, IHC, ELISA	Positive Controls:
Species Specificity: human, mouse	WB : mouse liver tissue, human liver tissue, L02 cells, MCF-7 cells
Note-IHC: suggested antigen retrieval with TE buffer pH 9.0; (*) Alternatively, antigen retrieval may be performed with citrate buffer pH 6.0	IHC : human liver tissue, human ovary tumor tissue

Background Information

GRHPR(Glyoxylate reductase/hydroxypyruvate reductase) is also named as GLXR and belongs to the D-isomer specific 2-hydroxyacid dehydrogenase family. The GRHPR gene encodes a predicted 328-amino acid protein with a calculated molecular mass of 35.5 kD. It has glyoxylate reductase (GR), hydroxypyruvate reductase (HPR) and D-glycerate dehydrogenase (DGDH) activities(PMID:16597637). Defects in GRHPR are the cause of hyperoxaluria primary type 2 (HP2)(PMID: 10484776). It can exist as a homodimer(PMID:16756993).

Storage

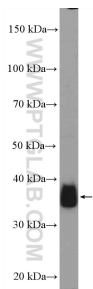
Storage:
Store at -20°C.
Storage Buffer:
PBS with 0.02% sodium azide and 50% glycerol pH 7.3.
Aliquoting is unnecessary for -20°C storage

*** 20ul sizes contain 0.1% BSA

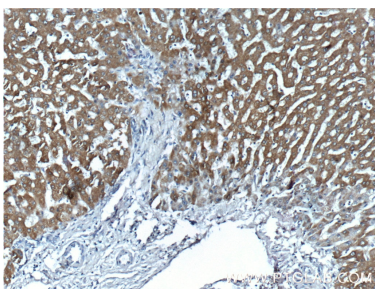
For technical support and original validation data for this product please contact:
T: 1 (888) 4PTGLAB (1-888-478-4522) (toll free in USA), or 1(312) 455-8498 (outside USA)
E: proteintech@ptglab.com
W: ptglab.com

This product is exclusively available under Proteintech Group brand and is not available to purchase from any other manufacturer.

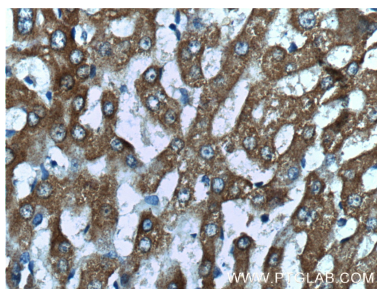
Selected Validation Data



mouse liver tissue were subjected to SDS PAGE followed by western blot with 51013-2-AP (GRHPR Antibody) at dilution of 1:600 incubated at room temperature for 1.5 hours.



Immunohistochemical analysis of paraffin-embedded human liver tissue slide using 51013-2-AP (GRHPR Antibody) at dilution of 1:200 (under 10x lens).



Immunohistochemical analysis of paraffin-embedded human liver tissue slide using 51013-2-AP (GRHPR Antibody) at dilution of 1:200 (under 40x lens).