

For Research Use Only

TOM1L1 Polyclonal antibody

Catalog Number: 51017-1-AP **1 Publications**



Basic Information

Catalog Number: 51017-1-AP	GenBank Accession Number: BC029396	Purification Method: Antigen affinity purification
Size: 150ul , Concentration: 133 µg/ml by Nanodrop and 133 µg/ml by Bradford method using BSA as the standard;	GeneID (NCBI): 10040	Recommended Dilutions: WB 1:500-1:2000 IHC 1:20-1:200
Source: Rabbit	Full Name: target of myb1 (chicken)-like 1	
Isotype: IgG	Calculated MW: 346 aa, 39 kDa	
Immunogen Catalog Number: AG0502	Observed MW: 53 kDa	

Applications

Tested Applications: IHC, WB, ELISA	Positive Controls: WB : HeLa cells,
Cited Applications: IP, WB	IHC : human prostate cancer tissue,
Species Specificity: human	
Cited Species: human	

Note-IHC: suggested antigen retrieval with TE buffer pH 9.0; (*) Alternatively, antigen retrieval may be performed with citrate buffer pH 6.0

Background Information

Notable Publications

Author	Pubmed ID	Journal	Application
Henriette U Balinda	35307409	Exp Cell Res	WB,IP

Storage

Storage:
Store at -20°C.
Storage Buffer:
PBS with 0.02% sodium azide and 50% glycerol pH 7.3.
Aliquoting is unnecessary for -20°C storage

***** 20ul sizes contain 0.1% BSA**

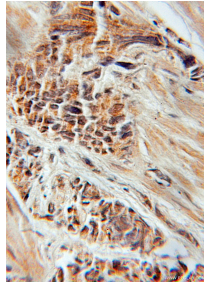
For technical support and original validation data for this product please contact:
T: 1 (888) 4PTGLAB (1-888-478-4522) (toll free in USA), or 1(312) 455-8498 (outside USA) E: proteintech@ptglab.com W: ptglab.com

This product is exclusively available under Proteintech Group brand and is not available to purchase from any other manufacturer.

Selected Validation Data



HeLa cells were subjected to SDS PAGE followed by western blot with 51017-1-AP (TOM1L1 antibody) at dilution of 1:500 incubated at room temperature for 1.5 hours.



Immunohistochemical analysis of paraffin-embedded human prostate cancer using 51017-1-AP (TOM1L1 antibody) at dilution of 1:50 (under 10x lens).