

For Research Use Only

GALC Polyclonal antibody

Catalog Number: 51051-2-AP

3 Publications



Basic Information

Catalog Number:

51051-2-AP

Size:

150ul, Concentration: 400 µg/ml by Nanodrop and 267 µg/ml by Bradford method using BSA as the standard;

Source:

Rabbit

Isotype:

IgG

Immunogen Catalog Number:

AG0483

GenBank Accession Number:

BC036518

GeneID (NCBI):

2581

UNIPROT ID:

P54803

Full Name:

galactosylceramidase

Calculated MW:

668 aa, 76 kDa

Observed MW:

30 kDa

Purification Method:

Antigen affinity purification

Recommended Dilutions:

WB 1:500-1:2000

IHC 1:20-1:200

IF/ICC 1:50-1:500

Applications

Tested Applications:

WB, IF, IHC, ELISA

Cited Applications:

WB

Species Specificity:

human, mouse

Cited Species:

human

Positive Controls:

WB : human brain tissue,

IHC : human gliomas tissue,

IF/ICC : SH-SY5Y cells,

Note-IHC: suggested antigen retrieval with TE buffer pH 9.0; (*) Alternatively, antigen retrieval may be performed with citrate buffer pH 6.0

Background Information

Galactosylceramidase (Galc) is a lysosomal enzyme involved in the catabolism of galactosylceramide, a major lipid in myelin, kidney, and epithelial cells of the small intestine and colon. The normal GALC mRNA encodes the 80 kDa precursor, which is processed into 50 and 30 kDa subunits. Mutation of GALC gene will lead to Krabbe disease (globoid cell leukodystrophy), an autosomal recessive neurodegenerative disorder that affects both the central and peripheral nervous system due to an enzymatic defect of galactocerebrosidase. This antibody is specific to GALC.

Notable Publications

Author	Pubmed ID	Journal	Application
Mohammad Arif Hossain	26108143	J Hum Genet	WB
Jagoda Litowczenko	37862812	Biomater Adv	
Hossain Mohammad Arif MA	24252386	Gene	WB

Storage

Storage:

Store at -20°C.

Storage Buffer:

PBS with 0.02% sodium azide and 50% glycerol pH 7.3.

Aliquoting is unnecessary for -20°C storage

*** 20ul sizes contain 0.1% BSA

For technical support and original validation data for this product please contact:

T: 1 (888) 4PTGLAB (1-888-478-4522) (toll free in USA), or 1(312) 455-8498 (outside USA)

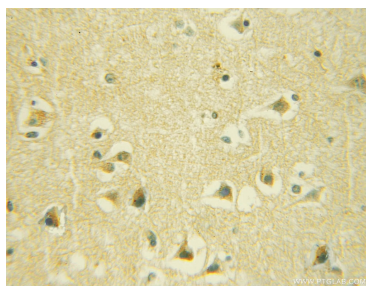
E: proteintech@ptglab.com
W: ptglab.com

This product is exclusively available under Proteintech Group brand and is not available to purchase from any other manufacturer.

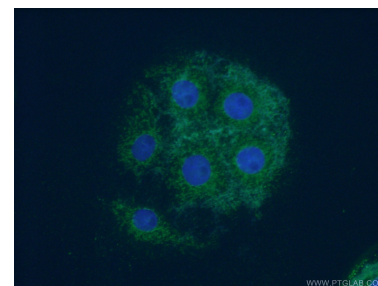
Selected Validation Data



human brain tissue were subjected to SDS PAGE followed by western blot with 51051-2-AP (GALC antibody) at dilution of 1:200 incubated at room temperature for 1.5 hours.



Immunohistochemical analysis of paraffin-embedded human gliomas using 51051-2-AP (GALC antibody) at dilution of 1:50 (under 10x lens).



Immunofluorescent analysis of (4% PFA) fixed SH-SY5Y cells using 51051-2-AP (GALC antibody) at dilution of 1:50 and Alexa Fluor 488-conjugated AffiniPure Goat Anti-Rabbit IgG(H+L).