

For Research Use Only

# STAT6 Polyclonal antibody

Catalog Number: 51073-1-AP

Featured Product

31 Publications



## Basic Information

### Catalog Number:

51073-1-AP

### Size:

150ul, Concentration: 500 ug/ml by Nanodrop;

### Source:

Rabbit

### Isotype:

IgG

### GenBank Accession Number:

BC075852

### GeneID (NCBI):

6778

### UNIPROT ID:

P42226

### Full Name:

signal transducer and activator of transcription 6, interleukin-4 induced

### Calculated MW:

94 kDa

### Observed MW:

100-110 kDa

### Purification Method:

Antigen affinity purification

### Recommended Dilutions:

WB: 1:5000-1:50000

IHC: 1:20-1:200

## Applications

### Tested Applications:

WB, IHC, ELISA

### Cited Applications:

WB, IHC, IF, ChIP, RIP

### Species Specificity:

human, mouse, rat

### Cited Species:

human, mouse, rat

**Note-IHC: suggested antigen retrieval with TE buffer pH 9.0; (\*) Alternatively, antigen retrieval may be performed with citrate buffer pH 6.0**

### Positive Controls:

**WB** : HeLa cells, NIH/3T3 cells, THP-1 cells, Jurkat cells, PC-12 cells

**IHC** : human spleen tissue, human lung tissue, mouse lung tissue, human colon cancer tissue

## Background Information

STAT6, also named as Signal transducer and activator of transcription 6, is a 847 amino acid protein, which belongs to the transcription factor STAT family. STAT6 forms a homodimer or a heterodimer with a related family member. STAT6 translocates into the nucleus in response to phosphorylation. STAT6 is Involved in IL4/interleukin-4- and IL3/interleukin-3-mediated signaling. The antibody could identify about 100 kDa band, similar to the reported in the literature(PMID: 10961983).

## Notable Publications

Author	Pubmed ID	Journal	Application
Xiwen Xiong	36232438	Int J Mol Sci	WB,IF
Weili Zheng	34778251	Front Cell Dev Biol	WB
Lingyan Chen	36443287	Cell Death Dis	WB

## Storage

### Storage:

Store at -20°C. Stable for one year after shipment.

### Storage Buffer:

PBS with 0.02% sodium azide and 50% glycerol, pH7.3

Aliquoting is unnecessary for -20°C storage

\*\*\* 20ul sizes contain 0.1% BSA

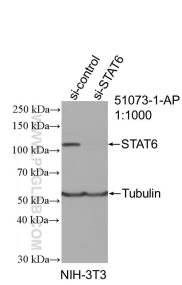
For technical support and original validation data for this product please contact:

T: 1 (888) 4PTGLAB (1-888-478-4522) (toll free in USA), or 1(312) 455-8498 (outside USA)

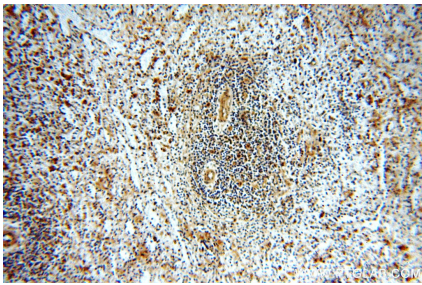
E: proteintech@ptglab.com  
W: ptglab.com

This product is exclusively available under Proteintech Group brand and is not available to purchase from any other manufacturer.

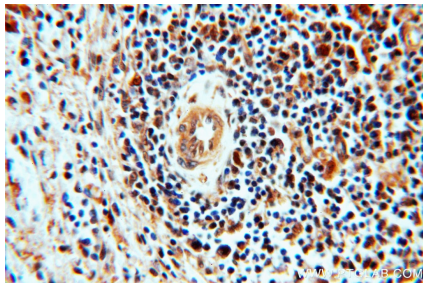
Selected Validation Data



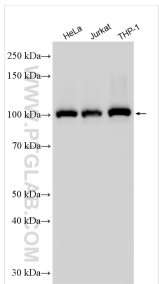
WB result of STAT6 antibody (51073-1-AP; 1:1000; incubated at room temperature for 1.5 hours) with sh-Control and sh-STAT6 transfected NIH/3T3 cells.



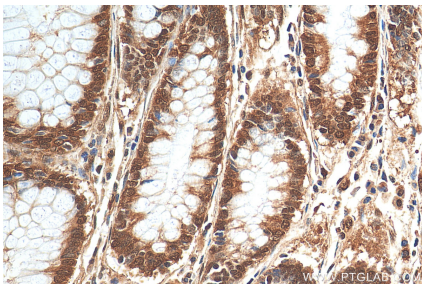
Immunohistochemical analysis of paraffin-embedded human spleen using 51073-1-AP (STAT6 antibody) at dilution of 1:50 (under 10x lens).



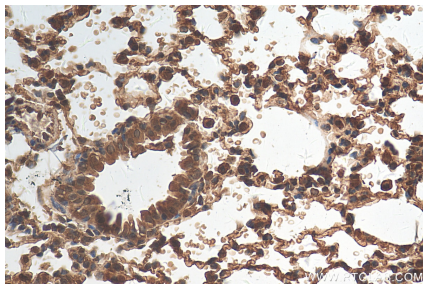
Immunohistochemical analysis of paraffin-embedded human spleen using 51073-1-AP (STAT6 antibody) at dilution of 1:50 (under 40x lens).



Various lysates were subjected to SDS PAGE followed by western blot with 51073-1-AP (STAT6 antibody) at dilution of 1:15000 incubated at room temperature for 1.5 hours.



Immunohistochemical analysis of paraffin-embedded human colon cancer tissue slide using 51073-1-AP (STAT6 antibody) at dilution of 1:200 (under 40x lens). Heat mediated antigen retrieval with Tris-EDTA buffer (pH 9.0).



Immunohistochemical analysis of paraffin-embedded mouse lung tissue slide using 51073-1-AP (STAT6 antibody) at dilution of 1:200 (under 40x lens). Heat mediated antigen retrieval with Tris-EDTA buffer (pH 9.0).