

For Research Use Only

KLHL14 Polyclonal antibody

Catalog Number: 51131-1-AP



Basic Information

Catalog Number: 51131-1-AP	GenBank Accession Number: BC021267	Purification Method: Antigen affinity purification
Size: 150ul , Concentration: 150 µg/ml by Nanodrop and 150 µg/ml by Bradford method using BSA as the standard;	GeneID (NCBI): 57565	Recommended Dilutions: WB 1:500-1:2000 IHC 1:20-1:200
Source: Rabbit	Full Name: kelch-like 14 (Drosophila)	
Isotype: IgG	Calculated MW: 44 kDa, 71 kDa	
	Observed MW: 55 kDa, 70 kDa	

Applications

Tested Applications:
IHC, WB, ELISA

Species Specificity:
human

Note-IHC: suggested antigen retrieval with **TE buffer pH 9.0; (*) Alternatively, antigen retrieval may be performed with citrate buffer pH 6.0**

Positive Controls:

WB : HEK-293 cells,

IHC : human ovary tumor tissue,

Background Information

Storage

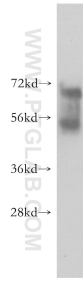
Storage:
Store at -20°C.
Storage Buffer:
PBS with 0.02% sodium azide and 50% glycerol pH 7.3.
Aliquoting is unnecessary for -20°C storage

*** 20ul sizes contain 0.1% BSA

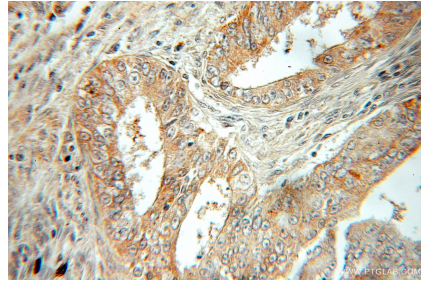
For technical support and original validation data for this product please contact:
T: 1 (888) 4PTGLAB (1-888-478-4522) (toll free in USA), or 1(312) 455-8498 (outside USA) E: proteintech@ptglab.com W: ptglab.com

This product is exclusively available under Proteintech Group brand and is not available to purchase from any other manufacturer.

Selected Validation Data



HEK-293 cells were subjected to SDS PAGE followed by western blot with 51131-1-AP (KLHL14 antibody) at dilution of 1:0 incubated at room temperature for 1.5 hours.



Immunohistochemical analysis of paraffin-embedded human ovary tumor using 51131-1-AP (KLHL14 antibody) at dilution of 1:50 (under 10x lens).