

For Research Use Only

RAF1 Polyclonal antibody

Catalog Number: 51140-1-AP

19 Publications



Basic Information

Catalog Number:

51140-1-AP

Size:

150ul, Concentration: 350 µg/ml by Nanodrop and 253 µg/ml by Bradford method using BSA as the standard;

Source:

Rabbit

Isotype:

IgG

GenBank Accession Number:

BC018119

GeneID (NCBI):

5894

UNIPROT ID:

P04049

Full Name:

v-raf-1 murine leukemia viral oncogene homolog 1

Calculated MW:

648 aa, 73 kDa

Purification Method:

Antigen affinity purification

Recommended Dilutions:

IHC 1:20-1:200

Applications

Tested Applications:

IHC, ELISA

Species Specificity:

human, mouse

Cited Species:

human, mouse, sheep

Note-IHC: suggested antigen retrieval with TE buffer pH 9.0; (*) Alternatively, antigen retrieval may be performed with citrate buffer pH 6.0

Positive Controls:

IHC : human prostate cancer tissue, human colon cancer tissue

Background Information

Raf-1 proto-oncogene, serine/threonine kinase(RAF1), is a MAP kinase kinase kinase (MAP3K), which functions downstream of the Ras family of membrane associated GTPases to which it binds directly. RAF1 has two isoforms with MW of 73, 75 kDa. RAF1 plays an important role in the control of gene expression involved in the cell division cycle, apoptosis, cell differentiation and cell migration.

Notable Publications

Author	Pubmed ID	Journal	Application
Yanan Li	27663303	BMC Microbiol	
Xiaoyan Wang	32900481	Biochem Biophys Res Commun	
Xiaofang Duan	34476429	Food Funct	

Storage

Storage:

Store at -20°C. Stable for one year after shipment.

Storage Buffer:

PBS with 0.02% sodium azide and 50% glycerol, pH7.3

Aliquoting is unnecessary for -20°C storage

*** 20ul sizes contain 0.1% BSA

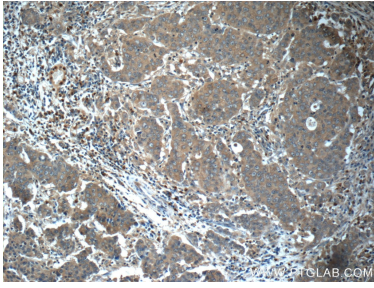
For technical support and original validation data for this product please contact:

T: 1 (888) 4PTGLAB (1-888-478-4522) (toll free in USA), or 1(312) 455-8498 (outside USA)

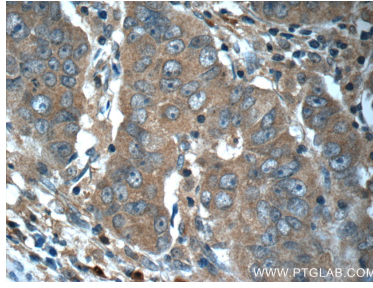
E: proteintech@ptglab.com
W: ptglab.com

This product is exclusively available under Proteintech Group brand and is not available to purchase from any other manufacturer.

Selected Validation Data



Immunohistochemical analysis of paraffin-embedded human prostate cancer tissue slide using 51140-1-AP (RAF1 Antibody) at dilution of 1:50 (under 10x lens).



Immunohistochemical analysis of paraffin-embedded human prostate cancer tissue slide using 51140-1-AP (RAF1 Antibody) at dilution of 1:50 (under 40x lens).