

For Research Use Only

# SETD1B Polyclonal antibody

Catalog Number: 55005-1-AP

Featured Product

9 Publications



## Basic Information

### Catalog Number:

55005-1-AP

### Size:

150ul, Concentration: 700 ug/ml by Nanodrop and 553 ug/ml by Bradford method using BSA as the standard;

### Source:

Rabbit

### Isotype:

IgG

### GenBank Accession Number:

NM\_015048

### GeneID (NCBI):

23067

### UNIPROT ID:

Q9UPS6

### Full Name:

SET domain containing 1B

### Calculated MW:

209 kDa

### Observed MW:

250-260 kDa, 450 kDa

### Purification Method:

Antigen affinity purification

### Recommended Dilutions:

WB 1:500-1:1000

IP 0.5-4.0 ug for 1.0-3.0 mg of total protein lysate

IHC 1:20-1:200

IF/ICC 1:50-1:500

## Applications

### Tested Applications:

WB, IHC, IF/ICC, IP, ELISA

### Cited Applications:

WB, IHC, IF, ChIP

### Species Specificity:

human, mouse

### Cited Species:

human, mouse

### Positive Controls:

WB : human brain tissue, MCF-7 cells, mouse liver tissue

IP : MCF-7 cells,

IHC : human breast cancer tissue, human ovary tumor tissue

IF/ICC : HepG2 cells,

**Note-IHC: suggested antigen retrieval with TE buffer pH 9.0; (\*) Alternatively, antigen retrieval may be performed with citrate buffer pH 6.0**

## Background Information

SETD1B, also named as KMT2G. Set1B associates with a about 450 kDa complex that contains all five non-catalytic components of the Set1A complex, including CFP1, Rbbp5, Ash2, Wdr5, and Wdr82. The complex is a histone methyltransferase that produces trimethylated histone H3 at Lys4. Set1B is widely expressed, and localize to a largely non-overlapping set of euchromatic nuclear speckles, suggesting that Set1B bind to a unique set of target genes and thus make non-redundant contributions to the epigenetic control of chromatin structure and gene expression( PMID: 17355966). The antibody is specific to SETD1B and, in westernblotting experiments, two specific bands can be detected, about 250 kDa, 450 kDa respectively, in addition, a unknown band around 70 kDa. This antibody is a rabbit polyclonal antibody raised against a region of human SETD1B.

## Notable Publications

Author	Pubmed ID	Journal	Application
Li Chen	36580757	Int Immunopharmacol	WB,IHC,ChIP
Chen Chen	34884975	Int J Mol Sci	WB
Yesim Bilmez	35445296	Histochem Cell Biol	IHC

## Storage

### Storage:

Store at -20°C. Stable for one year after shipment.

### Storage Buffer:

PBS with 0.02% sodium azide and 50% glycerol pH 7.3.

Aliquoting is unnecessary for -20°C storage

\*\*\* 20ul sizes contain 0.1% BSA

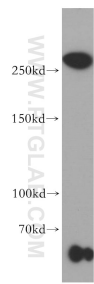
For technical support and original validation data for this product please contact:

T: 1 (888) 4PTGLAB (1-888-478-4522) (toll free in USA), or 1(312) 455-8498 (outside USA)

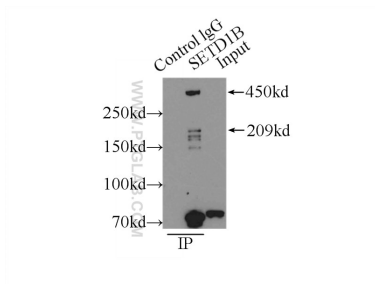
E: proteintech@ptglab.com  
W: ptglab.com

This product is exclusively available under Proteintech Group brand and is not available to purchase from any other manufacturer.

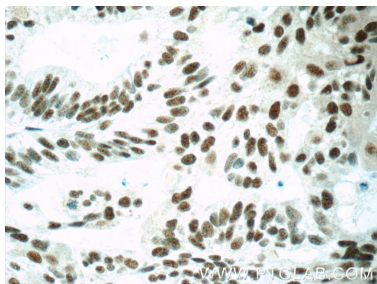
Selected Validation Data



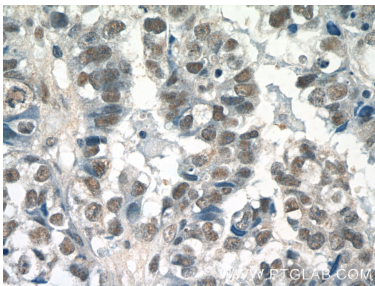
human brain tissue were subjected to SDS PAGE followed by western blot with 55005-1-AP (SETD1B antibody) at dilution of 1:800 incubated at room temperature for 1.5 hours.



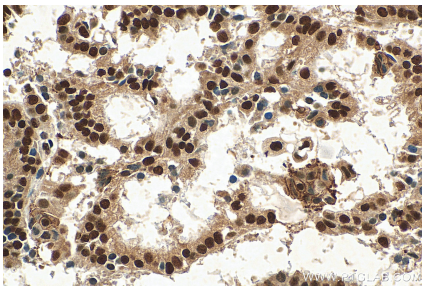
IP result of anti-SETD1B (IP:55005-1-AP, 5ug; Detection:55005-1-AP 1:300) with MCF-7 cells lysate 3250ug.



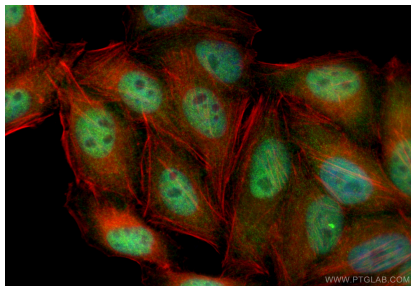
Immunohistochemical analysis of paraffin-embedded human ovary tumor tissue slide using 55005-1-AP (SETD1B Antibody) at dilution of 1:50 (under 40x lens).



Immunohistochemical analysis of paraffin-embedded human breast cancer tissue slide using 55005-1-AP (SETD1B Antibody) at dilution of 1:50 (under 40x lens).



Immunohistochemical analysis of paraffin-embedded human ovary tumor tissue slide using 55005-1-AP (SETD1B antibody) at dilution of 1:200 (under 40x lens). Heat mediated antigen retrieval with Tris-EDTA buffer (pH 9.0).



Immunofluorescent analysis of (4% PFA) fixed HepG2 cells using SETD1B antibody (55005-1-AP) at dilution of 1:200 and CoraLite®488-Conjugated Goat Anti-Rabbit IgG(H+L) (SA00013-2), CL594-phalloidin (red).