

For Research Use Only

HTRA1 Polyclonal antibody

Catalog Number:55011-1-AP

Featured Product

13 Publications



Basic Information

Catalog Number:

55011-1-AP

Size:

150ul , Concentration: 650 ug/ml by Nanodrop;

Source:

Rabbit

Isotype:

IgG

GenBank Accession Number:

NM_002775

GeneID (NCBI):

5654

UNIPROT ID:

Q92743

Full Name:

Htra serine peptidase 1

Calculated MW:

51 kDa

Observed MW:

35 kDa, 50 kDa, 42 kDa

Purification Method:

Antigen affinity purification

Recommended Dilutions:

WB 1:500-1:2000

IP 0.5-4.0 ug for 1.0-3.0 mg of total protein lysate

IHC 1:50-1:500

IF/ICC 1:10-1:100

Applications

Tested Applications:

WB, IHC, IF/ICC, IP, ELISA

Cited Applications:

WB, IHC, IF

Species Specificity:

human, mouse, rat

Cited Species:

human, mouse, rat, zebrafish

Positive Controls:

WB : L02 cells, mouse brain tissue, HAP1 cells, HepG2 cells

IP : L02 cells, HAP1 cells

IHC : human placenta tissue,

IF/ICC : HepG2 cells,

Note-IHC: suggested antigen retrieval with TE buffer pH 9.0; (*) Alternatively, antigen retrieval may be performed with citrate buffer pH 6.0

Background Information

HTRA1, also named as HTRA, PRSS11 and L56, belongs to the peptidase S1B family. It is a protease that regulates the availability of nsulin-like growth factors (IGFs) by cleaving IGF-binding proteins. HTRA1 represses signaling by TGF-beta family members. Variations in the promoter region of HTRA1 are the cause of susceptibility to age-related macular degeneration type 7 (ARMD7). Defects in HTRA1 are the cause of cerebral autosomal recessive arteriopathy with subcortical infarcts and leukoencephalopathy (CARASIL). The 50 kDa HTRA1 was found at varying levels in the majority samples tested, whereas the 42 kDa form of HTRA1 was identified in degenerated intervertebral disc protein samples(PMID:22556410). The short truncated monomer 37 kDa and dimer 74 kDa are proved (PMID:25329061). The antibody is specific to HTRA1.

Notable Publications

Author	Pubmed ID	Journal	Application
Yoshihito Oura	30273602	Am J Pathol	IHC,WB
Sandeep Kumar	28941979	Am J Pathol	IHC
Hong Xiang	29163548	Front Immunol	WB,IF

Storage

Storage:

Store at -20°C. Stable for one year after shipment.

Storage Buffer:

PBS with 0.02% sodium azide and 50% glycerol pH 7.3.

Aliquoting is unnecessary for -20°C storage

*** 20ul sizes contain 0.1% BSA

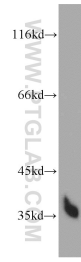
For technical support and original validation data for this product please contact:

T: 1 (888) 4PTGLAB (1-888-478-4522) (toll free in USA), or 1(312) 455-8498 (outside USA)

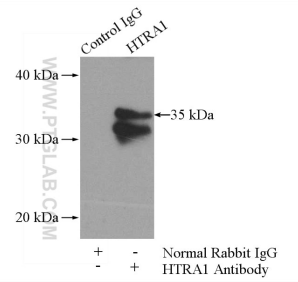
E: proteintech@ptglab.com
W: ptglab.com

This product is exclusively available under Proteintech Group brand and is not available to purchase from any other manufacturer.

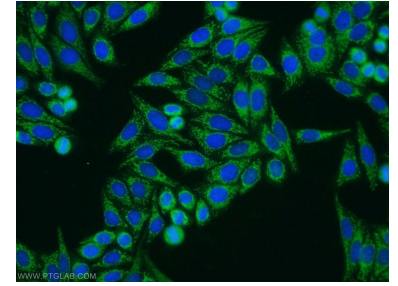
Selected Validation Data



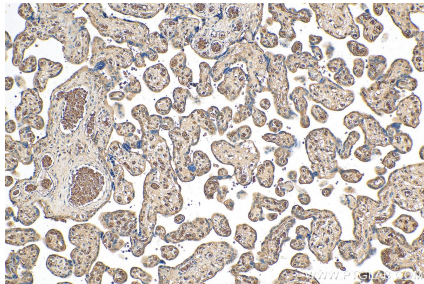
L02 cells were subjected to SDS PAGE followed by western blot with 55011-1-AP (HTRA1 antibody) at dilution of 1:600 incubated at room temperature for 1.5 hours.



IP result of anti-HTRA1 (IP:55011-1-AP, 4ug; Detection:55011-1-AP 1:500) with L02 cells lysate 1400ug.



Immunofluorescent analysis of HepG2 cells using 55011-1-AP (HTRA1 antibody) at dilution of 1:25 and Alexa Fluor 488-conjugated Goat Anti-Rabbit IgG(H+L).



Immunohistochemical analysis of paraffin-embedded human placenta tissue slide using 55011-1-AP (HTRA1 antibody) at dilution of 1:200 (under 10x lens). Heat mediated antigen retrieval with Tris-EDTA buffer (pH 9.0).