

For Research Use Only

SOS1 Polyclonal antibody

Catalog Number: 55041-1-AP

5 Publications



Basic Information

Catalog Number:

55041-1-AP

Size:

150ul, Concentration: 1200 ug/ml by Nanodrop;

Source:

Rabbit

Isotype:

IgG

GenBank Accession Number:

NM_005633

GeneID (NCBI):

6654

UNIPROT ID:

Q07889

Full Name:

son of sevenless homolog 1 (Drosophila)

Calculated MW:

152 kDa

Observed MW:

152 kDa

Purification Method:

Antigen affinity purification

Recommended Dilutions:

WB 1:500-1:2000

IP 0.5-4.0 ug for 1.0-3.0 mg of total protein lysate

IHC 1:50-1:500

IF/ICC 1:50-1:500

Applications

Tested Applications:

WB, IHC, IF/ICC, IP, ELISA

Cited Applications:

WB, IF

Species Specificity:

human, mouse, rat

Cited Species:

human

Note-IHC: suggested antigen retrieval with TE buffer pH 9.0; (*) Alternatively, antigen retrieval may be performed with citrate buffer pH 6.0

Positive Controls:

WB : K-562 cells, mouse brain tissue, THP-1 cells, SKOV-3 cells

IP : mouse brain tissue,

IHC : mouse colon tissue, human lung cancer tissue

IF/ICC : HeLa cells,

Background Information

SOS1 promotes the exchange of Ras-bound GDP by GTP. EPS8, E3B1 and SOS1 form a tricomplex in vivo that exhibits RAC-specific guanine nucleotide exchange factor activity in vitro. Defects in SOS1 are the cause of gingival fibromatosis 1 (GGF1). Defects in SOS1 are the cause of Noonan syndrome type 4 (NS4). The antibody is specific to SOS1.

Notable Publications

Author	Pubmed ID	Journal	Application
Damian Kolat	35563688	Cells	WB
Xinwen Wang	39563492	Adv Sci (Weinh)	WB,IF
Chandler R Keller	39199589	Cancers (Basel)	WB

Storage

Storage:

Store at -20°C. Stable for one year after shipment.

Storage Buffer:

0.1M NaHCO₃, 0.1M glycine, 0.02% sodium azide and 50% glycerol pH 7.3.

Aliquoting is unnecessary for -20°C storage

*** 20ul sizes contain 0.1% BSA

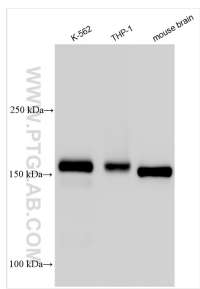
For technical support and original validation data for this product please contact:

T: 1 (888) 4PTGLAB (1-888-478-4522) (toll free in USA), or 1(312) 455-8498 (outside USA)

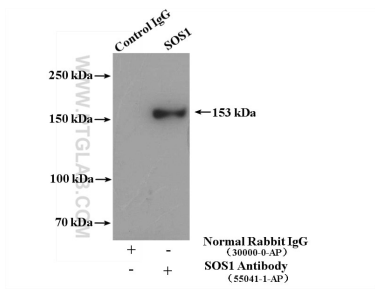
E: proteintech@ptglab.com
W: ptglab.com

This product is exclusively available under Proteintech Group brand and is not available to purchase from any other manufacturer.

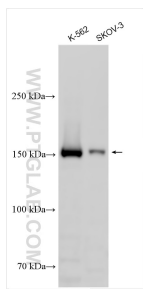
Selected Validation Data



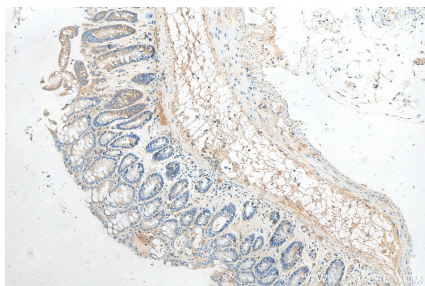
Various lysates were subjected to SDS PAGE followed by western blot with 55041-1-AP (SOS1 antibody) at dilution of 1:1000 incubated at room temperature for 1.5 hours.



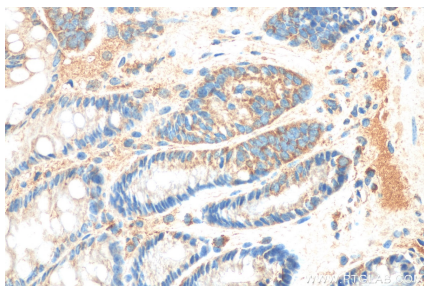
IP result of anti-SOS1 (IP:55041-1-AP, 4ug; Detection:55041-1-AP 1:500) with mouse brain tissue lysate 4000ug.



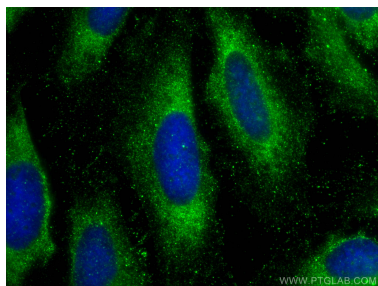
Various lysates were subjected to SDS PAGE followed by western blot with 55041-1-AP (SOS1 antibody) at dilution of 1:500 incubated at room temperature for 1.5 hours.



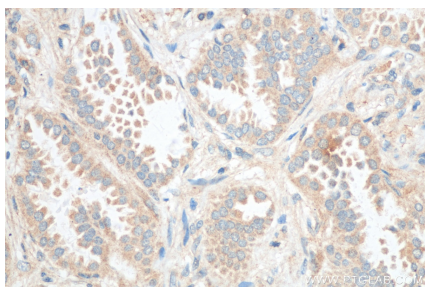
Immunohistochemical analysis of paraffin-embedded mouse colon tissue slide using 55041-1-AP (SOS1 antibody) at dilution of 1:200 (under 10x lens). Heat mediated antigen retrieval with Tris-EDTA buffer (pH 9.0).



Immunohistochemical analysis of paraffin-embedded mouse colon tissue slide using 55041-1-AP (SOS1 antibody) at dilution of 1:200 (under 40x lens). Heat mediated antigen retrieval with Tris-EDTA buffer (pH 9.0).



Immunofluorescent analysis of (-20°C Ethanol) fixed HeLa cells using SOS1 antibody (55041-1-AP) at dilution of 1:200 and CoraLite®488-Conjugated Goat Anti-Rabbit IgG(H+L).



Immunohistochemical analysis of paraffin-embedded human lung cancer tissue slide using 55041-1-AP (SOS1 antibody) at dilution of 1:200 (under 40x lens). Heat mediated antigen retrieval with Tris-EDTA buffer (pH 9.0).