

For Research Use Only

# PYCR2-specific Polyclonal antibody

Catalog Number: 55060-1-AP

3 Publications



## Basic Information

### Catalog Number:

55060-1-AP

### Size:

150ul, Concentration: 600 ug/ml by Nanodrop and 507 ug/ml by Bradford method using BSA as the standard;

### Source:

Rabbit

### Isotype:

IgG

### GenBank Accession Number:

NM\_013328

### GeneID (NCBI):

29920

### UNIPROT ID:

Q96C36

### Full Name:

pyrroline-5-carboxylate reductase family, member 2

### Calculated MW:

34 kDa

### Observed MW:

27-31 kDa, 20 kDa

### Purification Method:

Antigen affinity purification

### Recommended Dilutions:

WB 1:500-1:1000

IHC 1:50-1:500

IF/ICC 1:200-1:800

## Applications

### Tested Applications:

WB, IHC, IF/ICC, ELISA

### Cited Applications:

WB, IF

### Species Specificity:

human

### Cited Species:

human

**Note-IHC: suggested antigen retrieval with TE buffer pH 9.0; (\*) Alternatively, antigen retrieval may be performed with citrate buffer pH 6.0**

### Positive Controls:

WB : HeLa cells, L02 cells

IHC : human stomach cancer tissue,

IF/ICC : HeLa cells,

## Background Information

PYCR2, also named as P5CR2, belongs to the pyrroline-5-carboxylate reductase family. It catalyses the reaction: L-proline + NAD(P)<sup>+</sup> = 1-pyrroline-5-carboxylate + NAD(P)H. This antibody is specific to PYCR2 and has no cross reaction to PYCR1.

## Notable Publications

| Author            | Pubmed ID | Journal       | Application |
|-------------------|-----------|---------------|-------------|
| Bobby Jones       | 33446840  | Sci Rep       | WB          |
| Hongquan Chen     | 39125668  | Int J Mol Sci | WB          |
| Debanik Choudhury | 38354087  | Cell Rep      | WB,IF       |

## Storage

### Storage:

Store at -20°C. Stable for one year after shipment.

### Storage Buffer:

PBS with 0.02% sodium azide and 50% glycerol pH 7.3.

Aliquoting is unnecessary for -20°C storage

\*\*\* 20ul sizes contain 0.1% BSA

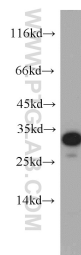
For technical support and original validation data for this product please contact:

T: 1 (888) 4PTGLAB (1-888-478-4522) (toll free in USA), or 1(312) 455-8498 (outside USA)

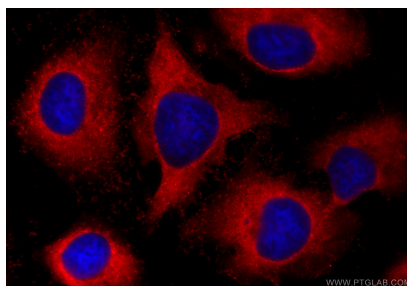
E: [proteintech@ptglab.com](mailto:proteintech@ptglab.com)  
W: [ptglab.com](http://ptglab.com)

This product is exclusively available under Proteintech Group brand and is not available to purchase from any other manufacturer.

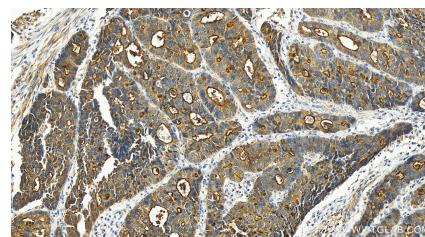
## Selected Validation Data



HeLa cells were subjected to SDS PAGE followed by western blot with 55060-1-AP (PYCR2 antibody) at dilution of 1:500 incubated at room temperature for 1.5 hours.



Immunofluorescent analysis of (-20°C Ethanol) fixed HeLa cells using PYCR2-specific antibody (55060-1-AP) at dilution of 1:400 and CoraLite® 594-Conjugated Goat Anti-Rabbit IgG(H+L) (SA00013-4).



Immunohistochemical analysis of paraffin-embedded human stomach cancer tissue slide using 55060-1-AP (PYCR2-specific antibody) at dilution of 1:100 (under 20x lens). Heat mediated antigen retrieval with Tris-EDTA buffer (pH 9.0).