

For Research Use Only

LNPEP Polyclonal antibody

Catalog Number: 55154-1-AP



Basic Information

Catalog Number:

55154-1-AP

Size:

150ul, Concentration: 1000 ug/ml by Nanodrop and 667 ug/ml by Bradford method using BSA as the standard;

Source:

Rabbit

Isotype:

IgG

GenBank Accession Number:

NM_005575

GeneID (NCBI):

4012

UNIPROT ID:

Q9UIQ6

Full Name:

leucyl/cystinyl aminopeptidase

Calculated MW:

117 kDa

Observed MW:

117-125 kDa

Purification Method:

Antigen affinity purification

Recommended Dilutions:

WB 1:500-1:1000

IHC 1:20-1:200

Applications

Tested Applications:

WB, IHC, ELISA

Species Specificity:

human

Note-IHC: suggested antigen retrieval with TE buffer pH 9.0; (*) Alternatively, antigen retrieval may be performed with citrate buffer pH 6.0

Positive Controls:

WB : human brain tissue, COLO 320 cells, human heart tissue

IHC : human heart tissue, human kidney tissue

Background Information

LNPEP, also named as OTASE, IRAP, P-LAP and Otase, may be involved in the inactivation of neuronal peptides in the brain. LNPEP cleaves Met-enkephalin and dynorphin. It binds angiotensin IV and may be the angiotensin IV receptor in the brain. It can be detected a protein with molecular mass of 165 kDa in several human tissues including heart, small intestine, kidney and 140 kDa in brain. LNPEP contains 18 potential N-glycosylation sites so that the differential usage of the glycosylation site in the brain causes the difference in the molecular mass of the enzyme.(PMID:11389728). Two forms of LNPEP are purified from human placenta: one is a monomeric, 61-kDa protein and the other is a heterodimeric protein with 64- and 97-kDa subunits(PMID:10601849). It can form a homodimer of 280 kDa(PMID:10601849). This antibody is specific to LNPEP.

Storage

Storage:

Store at -20°C.

Storage Buffer:

PBS with 0.02% sodium azide and 50% glycerol pH 7.3.

Aliquoting is unnecessary for -20°C storage

*** 20ul sizes contain 0.1% BSA

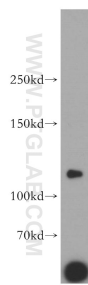
For technical support and original validation data for this product please contact:

T: 1 (888) 4PTGLAB (1-888-478-4522) (toll free in USA), or 1(312) 455-8498 (outside USA)

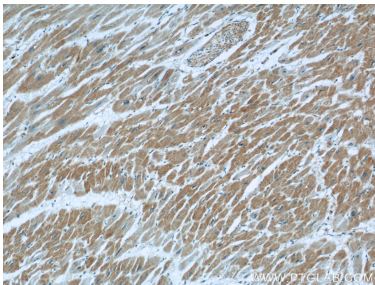
E: proteintech@ptglab.com
W: ptglab.com

This product is exclusively available under Proteintech Group brand and is not available to purchase from any other manufacturer.

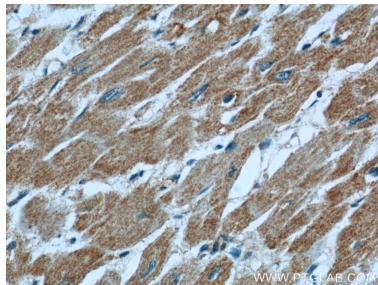
Selected Validation Data



human brain tissue were subjected to SDS PAGE followed by western blot with 55154-1-AP (LNPEP antibody) at dilution of 1:800 incubated at room temperature for 1.5 hours.



Immunohistochemical analysis of paraffin-embedded human heart using 55154-1-AP (LNPEP antibody) at dilution of 1:50 (under 10x lens).



Immunohistochemical analysis of paraffin-embedded human heart using 55154-1-AP (LNPEP antibody) at dilution of 1:50 (under 40x lens).