

For Research Use Only

# TULP4 Polyclonal antibody

Catalog Number: 55155-1-AP



## Basic Information

<b>Catalog Number:</b> 55155-1-AP	<b>GenBank Accession Number:</b> NM_020245	<b>Purification Method:</b> Antigen affinity purification
<b>Size:</b> 150ul , Concentration: 550 µg/ml by Nanodrop and 260 µg/ml by Bradford method using BSA as the standard;	<b>GeneID (NCBI):</b> 56995	<b>Recommended Dilutions:</b> WB 1:500-1:2400 IHC 1:20-1:200
<b>Source:</b> Rabbit	<b>Full Name:</b> tubby like protein 4	
<b>Isotype:</b> IgG	<b>Calculated MW:</b> 169 kDa	
	<b>Observed MW:</b> 169 kDa	

## Applications

**Tested Applications:**  
IHC, WB, ELISA

**Species Specificity:**  
human, mouse, rat

**Note-IHC: suggested antigen retrieval with TE buffer pH 9.0; (\*) Alternatively, antigen retrieval may be performed with citrate buffer pH 6.0**

**Positive Controls:**

WB : human skeletal muscle tissue, human brain tissue

IHC : human kidney tissue,

## Background Information

TULP4, also named as KIAA1397, TUBL4 and TUSP, belongs to the TUB family. It may be a substrate-recognition component of a SCF-like ECS (Elongin-Cullin-SOCS-box protein) E3 ubiquitin ligase complex which mediates the ubiquitination and subsequent proteasomal degradation of target proteins. This antibody is specific to TULP4.

## Storage

**Storage:**  
Store at -20°C.  
**Storage Buffer:**  
PBS with 0.02% sodium azide and 50% glycerol pH 7.3.  
Aliquoting is unnecessary for -20°C storage

\*\*\* 20ul sizes contain 0.1% BSA

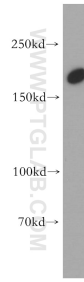
For technical support and original validation data for this product please contact:

T: 1 (888) 4PTGLAB (1-888-478-4522) (toll free in USA), or 1(312) 455-8498 (outside USA)

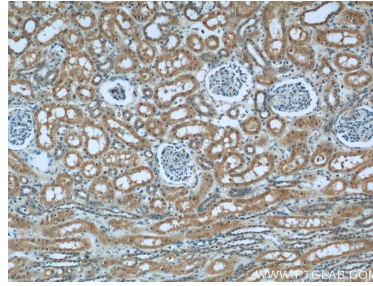
E: proteintech@ptglab.com  
W: ptglab.com

This product is exclusively available under Proteintech Group brand and is not available to purchase from any other manufacturer.

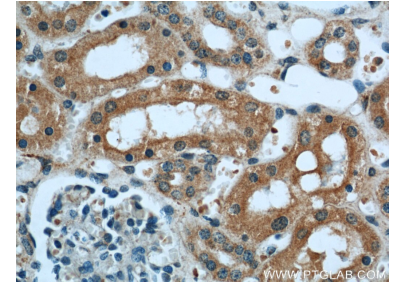
## Selected Validation Data



human skeletal muscle tissue were subjected to SDS PAGE followed by western blot with 55155-1-AP (TULP4 antibody) at dilution of 1:800 incubated at room temperature for 1.5 hours.



Immunohistochemical analysis of paraffin-embedded human kidney using 55155-1-AP (TULP4 antibody) at dilution of 1:50 (under 10x lens).



Immunohistochemical analysis of paraffin-embedded human kidney using 55155-1-AP (TULP4 antibody) at dilution of 1:50 (under 40x lens).