

For Research Use Only

XDH Polyclonal antibody

Catalog Number: 55156-1-AP

Featured Product

26 Publications



Basic Information

Catalog Number:

55156-1-AP

Size:

150ul, Concentration: 700 ug/ml by Nanodrop;

Source:

Rabbit

Isotype:

IgG

GenBank Accession Number:

NM_000379

GeneID (NCBI):

7498

UNIPROT ID:

P47989

Full Name:

xanthine dehydrogenase

Calculated MW:

146 kDa

Observed MW:

147-150 kDa

Purification Method:

Antigen affinity purification

Recommended Dilutions:

WB: 1:500-1:2000

IHC: 1:50-1:500

Applications

Tested Applications:

WB, IHC, ELISA

Cited Applications:

WB, IF

Species Specificity:

human, mouse, rat

Cited Species:

human, mouse, rat, chicken, zebrafish, bovine

Note-IHC: suggested antigen retrieval with TE buffer pH 9.0; (*) Alternatively, antigen retrieval may be performed with citrate buffer pH 6.0

Positive Controls:

WB: mouse liver tissue, rat liver tissue

IHC: human heart tissue,

Background Information

XDH, also named as XDHA, XO and XD, belongs to the xanthine dehydrogenase family. It catalyzes the last two steps of purine catabolism in man, formation of the end product uric acid from hypoxanthine and xanthine. The mammalian enzyme is synthesized as a dehydrogenase (XDH), which uses NAD as the electron acceptor, but it can be converted into an oxidase (XO) both in vivo and in vitro. This gene encodes a protein of 150 kDa and the 150 kDa polypeptide can be processed into a fragment of 130 kDa and further to 85 kDa by spontaneous proteolytic cleavage (PMID:9989587). In addition, the full length polypeptide can be also partially processed into a 87 kDa and 59 kDa fragments (PMID:21528298). It also can exist as a homodimer (PMID:9989587). This antibody is specific to XDH.

Notable Publications

Author	Pubmed ID	Journal	Application
Qi Xue Huang	36175227	J Dairy Sci	WB
Yiming Wang	33080936	Int J Mol Sci	WB
Lihua Zhang	36374311	Food Funct	WB

Storage

Storage:

Store at -20°C. Stable for one year after shipment.

Storage Buffer:

PBS with 0.02% sodium azide and 50% glycerol, pH7.3

Aliquoting is unnecessary for -20°C storage

*** 20ul sizes contain 0.1% BSA

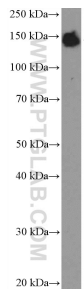
For technical support and original validation data for this product please contact:

T: 1 (888) 4PTGLAB (1-888-478-4522) (toll free in USA), or 1(312) 455-8498 (outside USA)

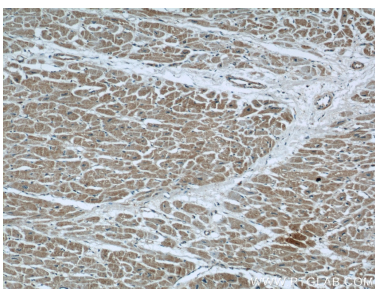
E: proteintech@ptglab.com
W: ptglab.com

This product is exclusively available under Proteintech Group brand and is not available to purchase from any other manufacturer.

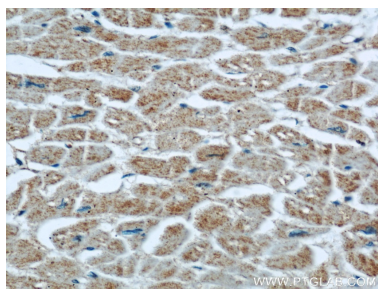
Selected Validation Data



mouse liver tissue were subjected to SDS PAGE followed by western blot with 55156-1-AP (XDH Antibody) at dilution of 1:1000 incubated at room temperature for 1.5 hours.



Immunohistochemical analysis of paraffin-embedded human heart using 55156-1-AP (XDH antibody) at dilution of 1:100 (under 10x lens).



Immunohistochemical analysis of paraffin-embedded human heart using 55156-1-AP (XDH antibody) at dilution of 1:100 (under 40x lens).