

For Research Use Only

RPGRIP1L Polyclonal antibody

Catalog Number: 55160-1-AP

Featured Product

25 Publications



Basic Information

Catalog Number:

55160-1-AP

Size:

150ul, Concentration: 450 µg/ml by Nanodrop and 400 µg/ml by Bradford method using BSA as the standard;

Source:

Rabbit

Isotype:

IgG

GenBank Accession Number:

NM_015272

GeneID (NCBI):

23322

UNIPROT ID:

Q68CZ1

Full Name:

RPGRIP1-like

Calculated MW:

151 kDa

Purification Method:

Antigen affinity purification

Recommended Dilutions:

WB 1:500-1:2000

IP 0.5-4.0 ug for 1.0-3.0 mg of total protein lysate

IHC 1:50-1:500

Applications

Tested Applications:

WB, IP, IHC, ELISA

Cited Applications:

WB, IHC, CoIP

Species Specificity:

human

Cited Species:

human, mouse, zebrafish, canine

Note-IHC: suggested antigen retrieval with TE buffer pH 9.0; (*) Alternatively, antigen retrieval may be performed with citrate buffer pH 6.0

Positive Controls:

WB : HEK-293 cells, human kidney tissue

IP : HEK-293 cells,

IHC : human pancreas tissue, human brain tissue

Background Information

RPGRIP1L, also named as FTM, KIAA1005, belongs to the RPGRIP1 family. It negatively regulates signaling through the G-protein coupled thromboxane A2 receptor. RPGRIP1L may be involved in mechanisms like programmed cell death, craniofacial development, patterning of the limbs, and formation of the left-right axis.(PMID:17558409) Defects in RPGRIP1L are the cause of Joubert syndrome type 7 (JBTS7). Defects in RPGRIP1L are the cause of Meckel syndrome type 5 (MKS5). This antibody is specific to RPGRIP1L.

Notable Publications

Author	Pubmed ID	Journal	Application
Philipp P Prosseda	28871046	J Cell Sci	
Caroline Shak	36268591	J Cell Sci	WB
Laura Vuolo	30320547	Elife	

Storage

Storage:

Store at -20°C. Stable for one year after shipment.

Storage Buffer:

PBS with 0.02% sodium azide and 50% glycerol pH 7.3.

Aliquoting is unnecessary for -20°C storage

*** 20ul sizes contain 0.1% BSA

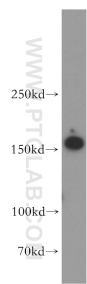
For technical support and original validation data for this product please contact:

T: 1 (888) 4PTGLAB (1-888-478-4522) (toll free in USA), or 1(312) 455-8498 (outside USA)

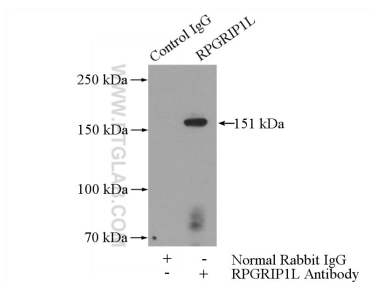
E: proteintech@ptglab.com
W: ptglab.com

This product is exclusively available under Proteintech Group brand and is not available to purchase from any other manufacturer.

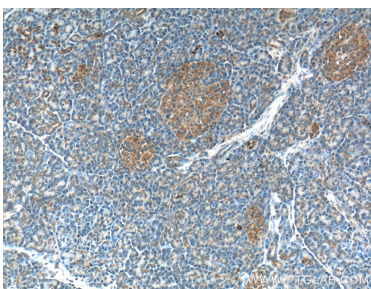
Selected Validation Data



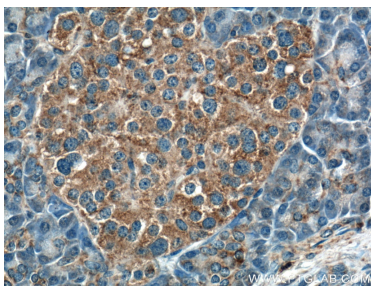
HEK-293 cells were subjected to SDS PAGE followed by western blot with 55160-1-AP (RPGRIP1L antibody) at dilution of 1:800 incubated at room temperature for 1.5 hours.



IP result of anti-RPGRIP1L (IP:55160-1-AP, 4ug; Detection:55160-1-AP 1:700) with HEK-293 cells lysate 3200ug.



Immunohistochemical analysis of paraffin-embedded human pancreas tissue slide using 55160-1-AP (RPGRIP1L antibody) at dilution of 1:200 (under 10x lens).



Immunohistochemical analysis of paraffin-embedded human pancreas tissue slide using 55160-1-AP (RPGRIP1L antibody) at dilution of 1:200 (under 40x lens).