

For Research Use Only

# PPP3CC-specific Polyclonal antibody

Catalog Number: 55163-1-AP

2 Publications



## Basic Information

### Catalog Number:

55163-1-AP

### Size:

150ul, Concentration: 600 ug/ml by Nanodrop and 200 ug/ml by Bradford method using BSA as the standard;

### Source:

Rabbit

### Isotype:

IgG

### GenBank Accession Number:

NM\_005605

### GeneID (NCBI):

5533

### UNIPROT ID:

P48454

### Full Name:

protein phosphatase 3 (formerly 2B), catalytic subunit, gamma isoform

### Calculated MW:

58 kDa

### Observed MW:

58 kDa

### Purification Method:

Antigen affinity purification

### Recommended Dilutions:

WB 1:500-1:2000

IHC 1:50-1:500

IF/ICC 1:50-1:500

## Applications

### Tested Applications:

WB, IHC, IF/ICC, ELISA

### Cited Applications:

WB, IHC

### Species Specificity:

human, mouse

### Cited Species:

human, rat

**Note-IHC: suggested antigen retrieval with TE buffer pH 9.0; (\*) Alternatively, antigen retrieval may be performed with citrate buffer pH 6.0**

### Positive Controls:

WB: fetal human brain tissue, human brain tissue, human testis tissue

IHC: human stomach tissue,

IF/ICC: U2OS cells,

## Background Information

PPP3CC, also named as CALNA3 and CNA3, belongs to the PPP phosphatase family and PP-2B subfamily. It is a calcium-dependent, calmodulin-stimulated protein phosphatase. It may have a role in the calmodulin activation of calcineurin. This antibody is specific to PPP3CC.

## Notable Publications

Author	Pubmed ID	Journal	Application
Hong Cao	35235867	Acta Biomater	WB
Yan Fang	39127651	BMC Pregnancy Childbirth	IHC

## Storage

### Storage:

Store at -20°C. Stable for one year after shipment.

### Storage Buffer:

PBS with 0.02% sodium azide and 50% glycerol pH 7.3.

Aliquoting is unnecessary for -20°C storage

\*\*\* 20ul sizes contain 0.1% BSA

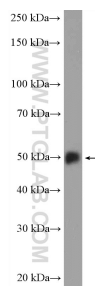
For technical support and original validation data for this product please contact:

T: 1 (888) 4PTGLAB (1-888-478-4522) (toll free in USA), or 1(312) 455-8498 (outside USA)

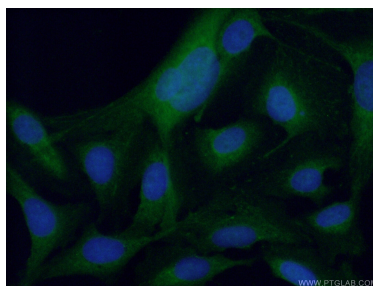
E: [proteintech@ptglab.com](mailto:proteintech@ptglab.com)  
W: [ptglab.com](http://ptglab.com)

This product is exclusively available under Proteintech Group brand and is not available to purchase from any other manufacturer.

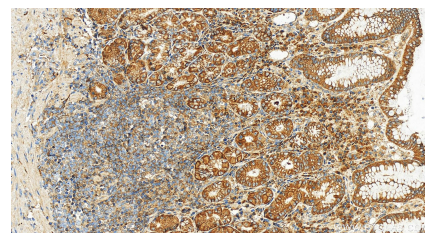
## Selected Validation Data



fetal human brain tissue were subjected to SDS PAGE followed by western blot with 55163-1-AP (PPP3CC-specific antibody at dilution of 1:1000 incubated at room temperature for 1.5 hours.



Immunofluorescent analysis of (4% PFA) fixed U2OS cells using 55163-1-AP (PPP3CC-specific antibody) at dilution of 1:50 and Alexa Fluor 488-conjugated AffiniPure Goat Anti-Rabbit IgG(H+L).



Immunohistochemical analysis of paraffin-embedded human stomach tissue slide using 55163-1-AP (PPP3CC-specific antibody) at dilution of 1:200 (under 20x lens). Heat mediated antigen retrieval with Tris-EDTA buffer (pH 9.0).