

For Research Use Only

# ENO3-specific Polyclonal antibody

Catalog Number: 55234-1-AP

Featured Product

4 Publications



## Basic Information

### Catalog Number:

55234-1-AP

### Size:

150ul, Concentration: 900 ug/ml by Nanodrop and 760 ug/ml by Bradford method using BSA as the standard;

### Source:

Rabbit

### Isotype:

IgG

### GenBank Accession Number:

NM\_001976

### GeneID (NCBI):

2027

### UNIPROT ID:

P13929

### Full Name:

enolase 3 (beta, muscle)

### Calculated MW:

47 kDa

### Observed MW:

42-47 kDa

### Purification Method:

Antigen affinity purification

### Recommended Dilutions:

WB 1:2000-1:10000

IHC 1:250-1:1000

IF/ICC 1:50-1:500

## Applications

### Tested Applications:

WB, IHC, IF/ICC, ELISA

### Cited Applications:

WB, IHC

### Species Specificity:

human, mouse

### Cited Species:

human, bovine

**Note-IHC: suggested antigen retrieval with TE buffer pH 9.0; (\*) Alternatively, antigen retrieval may be performed with citrate buffer pH 6.0**

### Positive Controls:

**WB**: HeLa cells, SH-SY5Y cells, HepG2 cells, mouse brain tissue, Jurkat cells

**IHC**: mouse skeletal muscle tissue, human heart tissue, human skeletal muscle tissue

**IF/ICC**: HeLa cells,

## Background Information

ENO3, also named as MSE, belongs to the enolase family. It appears to have a function in striated muscle development and regeneration. Defects in ENO3 are the cause of glycogen storage disease type 13 (GSD13). This antibody is specific to ENO3. It has no cross reaction to ENO1 and ENO2.

## Notable Publications

Author	Pubmed ID	Journal	Application
Turner H Swartz	34153542	J Proteomics	WB
M D Xi	29352487	Reprod Domest Anim	WB
Jingyu Chen	35477821	Med Oncol	WB,IHC

## Storage

### Storage:

Store at -20°C. Stable for one year after shipment.

### Storage Buffer:

PBS with 0.02% sodium azide and 50% glycerol pH 7.3.

Aliquoting is unnecessary for -20°C storage

\*\*\* 20ul sizes contain 0.1% BSA

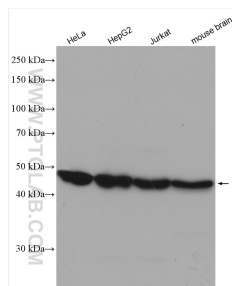
For technical support and original validation data for this product please contact:

T: 1 (888) 4PTGLAB (1-888-478-4522) (toll free in USA), or 1(312) 455-8498 (outside USA)

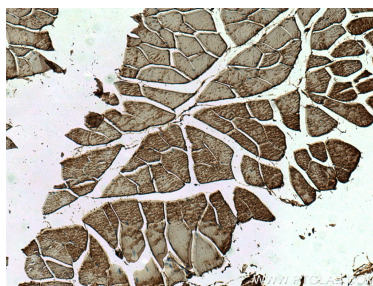
E: [proteintech@ptglab.com](mailto:proteintech@ptglab.com)  
W: [ptglab.com](http://ptglab.com)

This product is exclusively available under Proteintech Group brand and is not available to purchase from any other manufacturer.

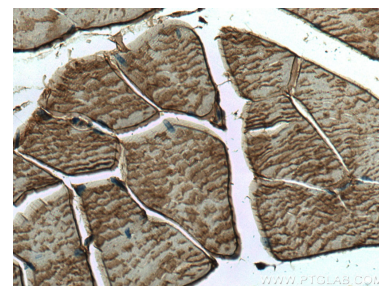
## Selected Validation Data



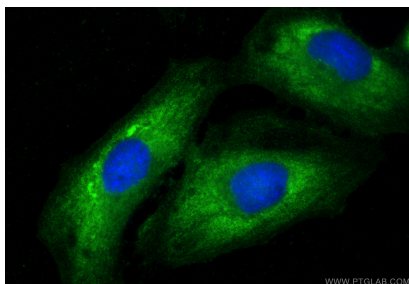
Various lysates were subjected to SDS PAGE followed by western blot with 55234-1-AP (ENO3-specific antibody) at dilution of 1:2000 incubated at room temperature for 1.5 hours.



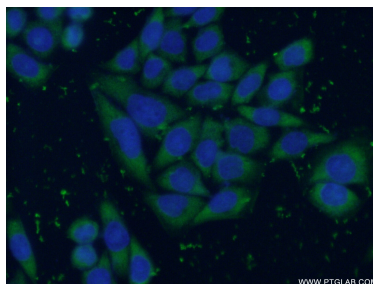
Immunohistochemical analysis of paraffin-embedded mouse skeletal muscle tissue slide using 55234-1-AP (ENO3-specific antibody) at dilution of 1:500 (under 10x lens). Heat mediated antigen retrieval with Tris-EDTA buffer (pH 9.0).



Immunohistochemical analysis of paraffin-embedded mouse skeletal muscle tissue slide using 55234-1-AP (ENO3-specific antibody) at dilution of 1:500 (under 40x lens). Heat mediated antigen retrieval with Tris-EDTA buffer (pH 9.0).



Immunofluorescent analysis of (-20°C Ethanol) fixed HeLa cells using ENO3-specific antibody (55234-1-AP) at dilution of 1:200 and CoraLite®488-Conjugated Goat Anti-Rabbit IgG(H+L) (SA00013-2).



Immunofluorescent analysis of (-20°C Ethanol) fixed HeLa cells using 55234-1-AP (ENO3-specific antibody) at dilution of 1:50 and Alexa Fluor 488-conjugated Goat Anti-Rabbit IgG(H+L).