

For Research Use Only

Placental lactogen Polyclonal antibody

Catalog Number: 55236-1-AP



Basic Information

Catalog Number:

55236-1-AP

Size:

150ul, Concentration: 800 ug/ml by Nanodrop and 147 ug/ml by Bradford method using BSA as the standard;

Source:

Rabbit

Isotype:

IgG

GenBank Accession Number:

NM_001317

GeneID (NCBI):

1442

UNIPROT ID:

PODML3

Full Name:

chorionic somatomammotropin hormone 1 (placental lactogen)

Calculated MW:

25 kDa

Observed MW:

23-25 kDa

Purification Method:

Antigen affinity purification

Recommended Dilutions:

WB 1:500-1:1000

IHC 1:20-1:200

Applications

Tested Applications:

WB, IHC, ELISA

Species Specificity:

human

Positive Controls:

WB : human placenta tissue,

IHC : human placenta tissue,

Note-IHC: suggested antigen retrieval with TE buffer pH 9.0; (*) Alternatively, antigen retrieval may be performed with citrate buffer pH 6.0

Background Information

CSH1, also named as PL, CSH2 and Lactogen, belongs to the somatotropin/prolactin family. CSH1 produced only during pregnancy and is involved in stimulating lactation, fetal growth and metabolism. It does not interact with GHR but only activates PRLR through zinc-induced dimerization(PubMed: 2744760). This antibody is specific to CSH1.

Storage

Storage:

Store at -20°C.

Storage Buffer:

PBS with 0.02% sodium azide and 50% glycerol pH 7.3.

Aliquoting is unnecessary for -20°C storage

***** 20ul sizes contain 0.1% BSA**

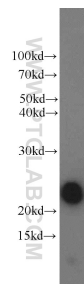
For technical support and original validation data for this product please contact:

T: 1 (888) 4PTGLAB (1-888-478-4522) (toll free in USA), or 1(312) 455-8498 (outside USA)

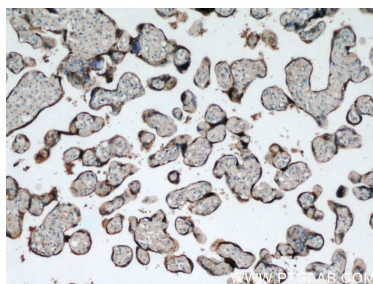
E: proteintech@ptglab.com
W: ptglab.com

This product is exclusively available under Proteintech Group brand and is not available to purchase from any other manufacturer.

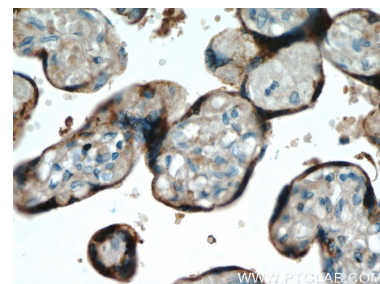
Selected Validation Data



human placenta tissue were subjected to SDS PAGE followed by western blot with 55236-1-AP (Placental lactogen antibody) at dilution of 1:800 incubated at room temperature for 1.5 hours.



Immunohistochemical analysis of paraffin-embedded human placenta using 55236-1-AP (Placental lactogen antibody) at dilution of 1:50 (under 10x lens).



Immunohistochemical analysis of paraffin-embedded human placenta using 55236-1-AP (Placental lactogen antibody) at dilution of 1:50 (under 40x lens).