

For Research Use Only

Caspase 12 Polyclonal antibody

Catalog Number: 55238-1-AP

Featured Product

107 Publications



Basic Information

Catalog Number:

55238-1-AP

Size:

150ul, Concentration: 550 ug/ml by Nanodrop;

Source:

Rabbit

Isotype:

IgG

GenBank Accession Number:

NR_000035

GeneID (NCBI):

120329

Full Name:

caspase 12 (gene/pseudogene)

Calculated MW:

39 kDa

Observed MW:

36-42 kDa, 50 kDa

Purification Method:

Antigen affinity purification

Recommended Dilutions:

WB: 1:500-1:2000

IP: 0.5-4.0 ug for 1.0-3.0 mg of total protein lysate

IHC: 1:50-1:500

IF/ICC: 1:50-1:500

Applications

Tested Applications:

WB, IHC, IF/ICC, IP, ELISA

Cited Applications:

WB, IHC, IF

Species Specificity:

human

Cited Species:

human, pig, hamster

Note-IHC: suggested antigen retrieval with TE buffer pH 9.0; (*) Alternatively, antigen retrieval may be performed with citrate buffer pH 6.0

Positive Controls:

WB: HEK-293 cells, multi-cells

IP: HEK-293 cells,

IHC: human prostate hyperplasia tissue, human heart tissue

IF/ICC: HeLa cells,

Background Information

Caspase 12 is an enzyme known as a cysteine protease. It belongs to a family of enzymes called caspases that cleave their substrates at C-terminal aspartic acid residues. It is most highly related to members of the ICE subfamily of caspases that process inflammatory cytokines. Caspase-12 is located in the endoplasmic reticulum (ER). It is responsible for ER-stress-induced apoptosis, such as high calcium concentration, low oxygen and low glucose levels. Caspase-12 Antibody detects endogenous levels of full-length caspase-12 protein (50 kDa) and its cleaved product (40-44 kDa). This antibody does not cross-react with other caspases.

Notable Publications

Author	Pubmed ID	Journal	Application
Xiaowei Niu	30232231	Biosci Rep	WB
Yu Wang	32897804	Pharm Biol	WB
Meng Wang	33014875	Front Oncol	WB

Storage

Storage:

Store at -20°C. Stable for one year after shipment.

Storage Buffer:

PBS with 0.02% sodium azide and 50% glycerol, pH7.3

Aliquoting is unnecessary for -20°C storage

*** 20ul sizes contain 0.1% BSA

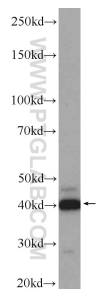
For technical support and original validation data for this product please contact:

T: 1 (888) 4PTGLAB (1-888-478-4522) (toll free in USA), or 1(312) 455-8498 (outside USA)

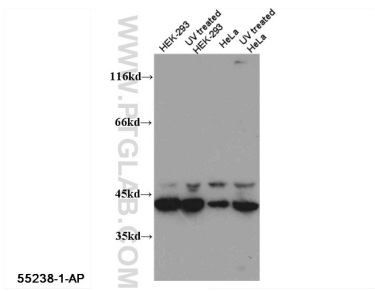
E: proteintech@ptglab.com
W: ptglab.com

This product is exclusively available under Proteintech Group brand and is not available to purchase from any other manufacturer.

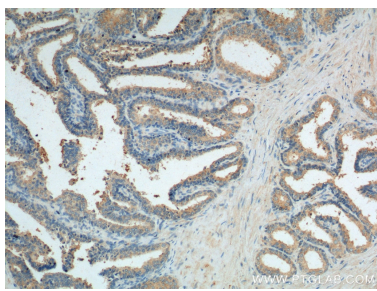
Selected Validation Data



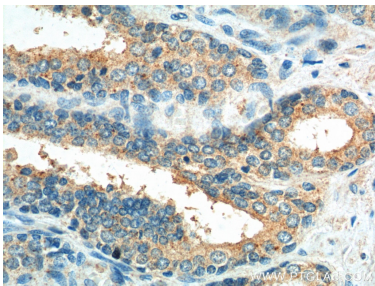
HEK-293 cells were subjected to SDS PAGE followed by western blot with 55238-1-AP (CASP12 antibody) at dilution of 1:1000 incubated at room temperature for 1.5 hours.



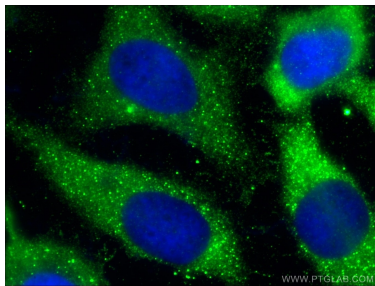
WB result of 55238-1-AP (CASP12 antibody) with various lysates.



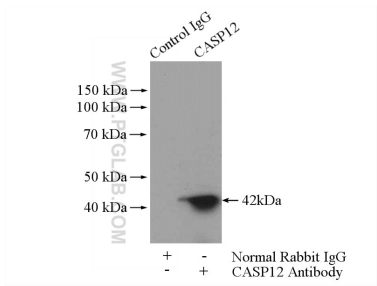
Immunohistochemical analysis of paraffin-embedded human prostate hyperplasia tissue slide using 55238-1-AP (Caspase 12 Antibody) at dilution of 1:200 (under 10x lens).



Immunohistochemical analysis of paraffin-embedded human prostate hyperplasia tissue slide using 55238-1-AP (Caspase 12 Antibody) at dilution of 1:200 (under 40x lens).



Immunofluorescent analysis of (10% Formaldehyde) fixed HeLa cells using 55238-1-AP (Caspase 12 antibody) at dilution of 1:50 and Alexa Fluor 488-conjugated Goat Anti-Rabbit IgG(H+L).



IP result of anti-Caspase 12 (IP:55238-1-AP, 4ug; Detection:55238-1-AP 1:1000) with HEK-293 cells lysate 2000ug.