

For Research Use Only

Growth Hormone Polyclonal antibody

Catalog Number: 55243-1-AP

5 Publications



Basic Information

Catalog Number: 55243-1-AP	GenBank Accession Number: NM_000515	Purification Method: Antigen affinity purification
Size: 150ul , Concentration: 1000 ug/ml by Nanodrop;	GeneID (NCBI): 2688	Recommended Dilutions: WB: 1:500-1:2000 IHC: 1:50-1:500
Source: Rabbit	UNIPROT ID: P01241	
Isotype: IgG	Full Name: GH1	
	Calculated MW: 25 kDa	
	Observed MW: 22 kDa	

Applications

Tested Applications: WB, IHC, ELISA	Positive Controls: WB : human placenta tissue, IHC : human pituitary tissue, human pituitary adenoma tissue
Cited Applications: WB, IF	
Species Specificity: human	
Cited Species: mouse, rat	
Note-IHC: suggested antigen retrieval with TE buffer pH 9.0; (*) Alternatively, antigen retrieval may be performed with citrate buffer pH 6.0	

Background Information

GH1, also named as GH and GH-N, belongs to the somatotropin/prolactin family. GH1 plays an important role in growth control. Its major role in stimulating body growth is to stimulate the liver and other tissues to secrete IGF-1. It stimulates both the differentiation and proliferation of myoblasts. It also stimulates amino acid uptake and protein synthesis in muscle and other tissues. This antibody has no cross reaction to CSH1.

Notable Publications

Author	Pubmed ID	Journal	Application
Jian Mao	31666193	Metabolism	IF
Joseph Walters	35537288	Biochem Biophys Res Commun	WB,IF
Bin Li	39798407	Psychoneuroendocrinology	WB

Storage

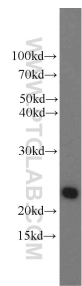
Storage:
Store at -20°C. Stable for one year after shipment.
Storage Buffer:
PBS with 0.02% sodium azide and 50% glycerol, pH7.3
Aliquoting is unnecessary for -20°C storage

*** 20ul sizes contain 0.1% BSA

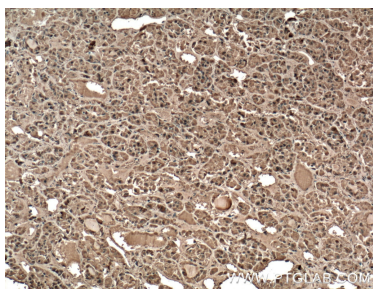
For technical support and original validation data for this product please contact:
T: 1 (888) 4PTGLAB (1-888-478-4522) (toll free in USA), or 1(312) 455-8498 (outside USA)
E: proteintech@ptglab.com
W: ptglab.com

This product is exclusively available under Proteintech Group brand and is not available to purchase from any other manufacturer.

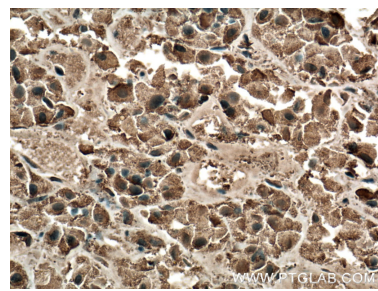
Selected Validation Data



human placenta tissue were subjected to SDS PAGE followed by western blot with 55243-1-AP (GH1 antibody) at dilution of 1:800 incubated at room temperature for 1.5 hours.



Immunohistochemical analysis of paraffin-embedded human pituitary tissue slide using 55243-1-AP (GH1 antibody at dilution of 1:200 (under 10x lens). Heat mediated antigen retrieval with Tris-EDTA buffer (pH 9.0).



Immunohistochemical analysis of paraffin-embedded human pituitary tissue slide using 55243-1-AP (GH1 antibody at dilution of 1:200 (under 40x lens). Heat mediated antigen retrieval with Tris-EDTA buffer (pH 9.0).