

For Research Use Only

GPR35 Polyclonal antibody

Catalog Number: 55248-1-AP

Featured Product

2 Publications



Basic Information

Catalog Number: 55248-1-AP	GenBank Accession Number: NM_005301	Purification Method: Antigen affinity purification
Size: 150ul , Concentration: 500 µg/ml by Nanodrop and 300 µg/ml by Bradford method using BSA as the standard;	GeneID (NCBI): 2859	Recommended Dilutions: WB 1:500-1:2000
Source: Rabbit	Full Name: G protein-coupled receptor 35	
Isotype: IgG	Calculated MW: 34 kDa	
	Observed MW: 30-34 kDa	

Applications

Tested Applications: FC, WB, ELISA	Positive Controls: WB : A549 cells, human brain tissue, human stomach tissue
Cited Applications: WB	
Species Specificity: human	
Cited Species: human	

Background Information

GPR35, also named as KYNA receptor, belongs to the G-protein coupled receptor 1 family. GPR35 acts as a receptor for kynurenic acid, an intermediate in the tryptophan metabolic pathway. The activity of GPR35 is mediated by G-proteins that elicit calcium mobilization and inositol phosphate production through G(q/i/o) proteins (PMID:16754668). This antibody is specific to GPR35.

Notable Publications

Author	Pubmed ID	Journal	Application
Di Wang	33777681	Acta Pharm Sin B	WB
Wuxiyar Otkur	37054942	Eur J Pharmacol	WB

Storage

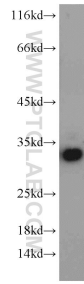
Storage:
Store at -20°C. Stable for one year after shipment.
Storage Buffer:
PBS with 0.02% sodium azide and 50% glycerol pH 7.3.
Aliquoting is unnecessary for -20°C storage

*** 20ul sizes contain 0.1% BSA

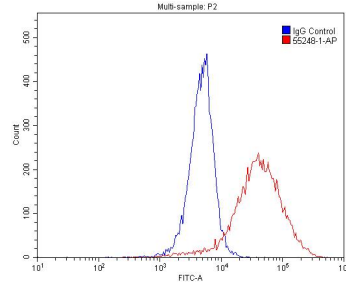
For technical support and original validation data for this product please contact:
T: 1 (888) 4PTGLAB (1-888-478-4522) (toll free in USA), or 1(312) 455-8498 (outside USA)
E: proteintech@ptglab.com
W: ptglab.com

This product is exclusively available under Proteintech Group brand and is not available to purchase from any other manufacturer.

Selected Validation Data



A549 cells were subjected to SDS PAGE followed by western blot with 55248-1-AP (GPR35 antibody) at dilution of 1:600 incubated at room temperature for 1.5 hours.



1×10^6 A549 cells were stained with 0.2ug GPR35 antibody (55248-1-AP, red) and control antibody (blue). Fixed with 4% PFA blocked with 3% BSA (30 min). Alexa Fluor 488-conjugated AffiniPure Goat Anti-Rabbit IgG(H+L) with dilution 1:1500.