

For Research Use Only

MMP21 Polyclonal antibody

Catalog Number: 55289-1-AP

Featured Product

3 Publications



Basic Information

Catalog Number:

55289-1-AP

Size:

150ul, Concentration: 1000 ug/ml by Nanodrop and 293 ug/ml by Bradford method using BSA as the standard;

Source:

Rabbit

Isotype:

IgG

GenBank Accession Number:

NM_147191

GeneID (NCBI):

118856

UNIPROT ID:

Q8N119

Full Name:

matrix metalloproteinase 21

Calculated MW:

65 kDa

Observed MW:

67 kDa

Purification Method:

Antigen affinity purification

Recommended Dilutions:

WB 1:500-1:1000

IF/ICC 1:20-1:200

Applications

Tested Applications:

WB, IF/ICC, ELISA

Cited Applications:

WB, IF, IHC

Species Specificity:

human, mouse

Cited Species:

human, mouse

Positive Controls:

WB : mouse liver tissue, L02 cells

IF/ICC : L02 cells,

Background Information

MMP21 belongs to the peptidase M10A family. It may have an important and specific function in tumor progression and embryogenesis. It cleaves alpha-1-antitrypsin. The proenzyme without the signal peptide has a calculated molecular mass of 62 kD; following activation by furin, the processed enzyme has a calculated molecular mass of 49 kD(PMID:12617721),and MMP21 protein was detected in fetal neuroectoderm, in placenta, and in leukocytes(OMIM).This antibody is specific to MMP21.

Notable Publications

Author	Pubmed ID	Journal	Application
Xi-Ji Qin	36123719	Hum Genomics	WB
Jiangfan Zhou	35398966	Cancer Sci	WB,IHC
Kazuki Nakai	37923722	Nat Commun	IF

Storage

Storage:

Store at -20°C. Stable for one year after shipment.

Storage Buffer:

PBS with 0.02% sodium azide and 50% glycerol pH 7.3.

Aliquoting is unnecessary for -20°C storage

*** 20ul sizes contain 0.1% BSA

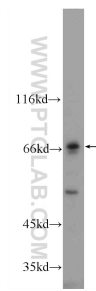
For technical support and original validation data for this product please contact:

T: 1 (888) 4PTGLAB (1-888-478-4522) (toll free in USA), or 1(312) 455-8498 (outside USA)

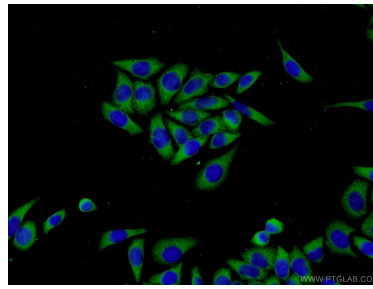
E: proteintech@ptglab.com
W: ptglab.com

This product is exclusively available under Proteintech Group brand and is not available to purchase from any other manufacturer.

Selected Validation Data



mouse liver tissue were subjected to SDS PAGE followed by western blot with 55289-1-AP (MMP21 Antibody) at dilution of 1:600 incubated at room temperature for 1.5 hours.



Immunofluorescent analysis of L02 cells using 55289-1-AP (MMP21 antibody) at dilution of 1:50 and Alexa Fluor 488-conjugated AffiniPure Goat Anti-Rabbit IgG(H+L).