

For Research Use Only

# RAB8A Polyclonal antibody

Catalog Number: 55296-1-AP

Featured Product

32 Publications



## Basic Information

### Catalog Number:

55296-1-AP

### Size:

150ul, Concentration: 900 ug/ml by Nanodrop;

### Source:

Rabbit

### Isotype:

IgG

### GenBank Accession Number:

NM\_005370

### GeneID (NCBI):

4218

### UNIPROT ID:

P61006

### Full Name:

RAB8A, member RAS oncogene family

### Calculated MW:

24 kDa

### Observed MW:

24 kDa

### Purification Method:

Antigen affinity purification

### Recommended Dilutions:

WB: 1:500-1:2000

IP: 0.5-4.0 ug for 1.0-3.0 mg of total protein lysate

IHC: 1:50-1:500

IF/ICC: 1:200-1:800

## Applications

### Tested Applications:

WB, IHC, IF/ICC, IP, ELISA

### Cited Applications:

WB, IHC, IF, IP, RIP

### Species Specificity:

human, mouse, rat

### Cited Species:

human, mouse, rat, pig, canine

### Positive Controls:

WB: A431 cells, mouse lung tissue, HepG2 cells, NIH/3T3 cells, human brain tissue, mouse skin tissue, HeLa cells

IP: HeLa cells,

IHC: human colon cancer tissue,

IF/ICC: NIH/3T3 cells,

**Note-IHC: suggested antigen retrieval with TE buffer pH 9.0; (\*) Alternatively, antigen retrieval may be performed with citrate buffer pH 6.0**

## Background Information

The Rab8 GTPase is a member of the Ras superfamily that functions in protein transport and membrane restructuring. RAB8 has two isoforms, RAB8A and RAB8B, that share 40% amino acid identity in the C-terminal variable region. RAB8 activity is regulated by specific guanine nucleotide exchange factors (GEFs), that mediate GTP loading, and GTPase activating proteins (GAPs) that convert them into the inactive GDP-bound form. RAB8 participates in recycling of the  $\alpha$ -amino-3-hydroxy-5-methyl-4-isoxazolepropionic acid (AMPA) receptors to the dendritic spine surface as well as in the intracellular transport of the metabotropic glutamate receptor type 1 in neuronal cells. Rab8 is activated at the base of the cilium by its guanine nucleotide exchanger Rabin8. The antibody 11792-1-AP can detect both RAB8A and RAB8B. 55295-1-AP is specific to RAB8B and 55296-1-AP is specific to RAB8A.

## Notable Publications

Author	Pubmed ID	Journal	Application
Khamal K Ampah	30254024	J Cell Sci	IF
Min Liu	34480124	Cell Res	WB,IF
Fangyan Yu	27767179	Sci Rep	IF

## Storage

### Storage:

Store at -20°C. Stable for one year after shipment.

### Storage Buffer:

PBS with 0.02% sodium azide and 50% glycerol, pH7.3

Aliquoting is unnecessary for -20°C storage

\*\*\* 20ul sizes contain 0.1% BSA

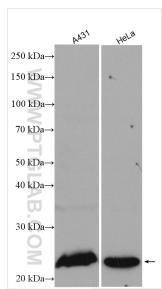
For technical support and original validation data for this product please contact:

T: 1 (888) 4PTGLAB (1-888-478-4522) (toll free in USA), or 1(312) 455-8498 (outside USA)

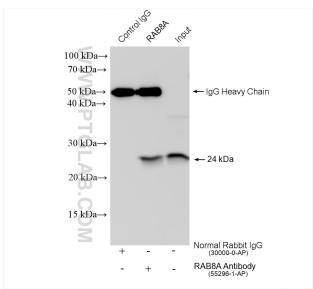
E: [proteintech@ptglab.com](mailto:proteintech@ptglab.com)  
W: [ptglab.com](http://ptglab.com)

This product is exclusively available under Proteintech Group brand and is not available to purchase from any other manufacturer.

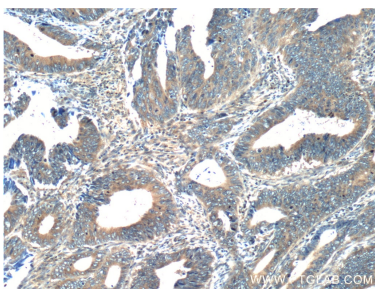
Selected Validation Data



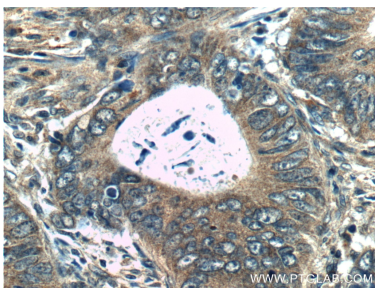
Various lysates were subjected to SDS PAGE followed by western blot with 55296-1-AP (RAB8A antibody) at dilution of 1:1000 incubated at room temperature for 1.5 hours.



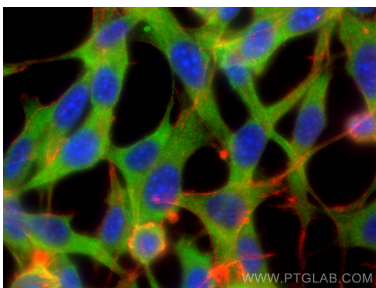
IP result of anti-RAB8A (IP:55296-1-AP, 4ug; Detection:55296-1-AP 1:600) with HeLa cells lysate 1320 ug.



Immunohistochemical analysis of paraffin-embedded human colon cancer tissue slide using 55296-1-AP (RAB8A Antibody) at dilution of 1:200 (under 10x lens).



Immunohistochemical analysis of paraffin-embedded human colon cancer tissue slide using 55296-1-AP (RAB8A Antibody) at dilution of 1:200 (under 40x lens).



Immunofluorescent analysis of (-20°C Ethanol) fixed NIH/3T3 cells using RAB8A antibody (55296-1-AP) at dilution of 1:400 and CoraLite®488-Conjugated Goat Anti-Rabbit IgG(H+L) (SA00013-2), CL594-Phalloidin (red).